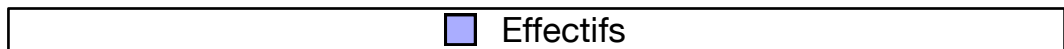
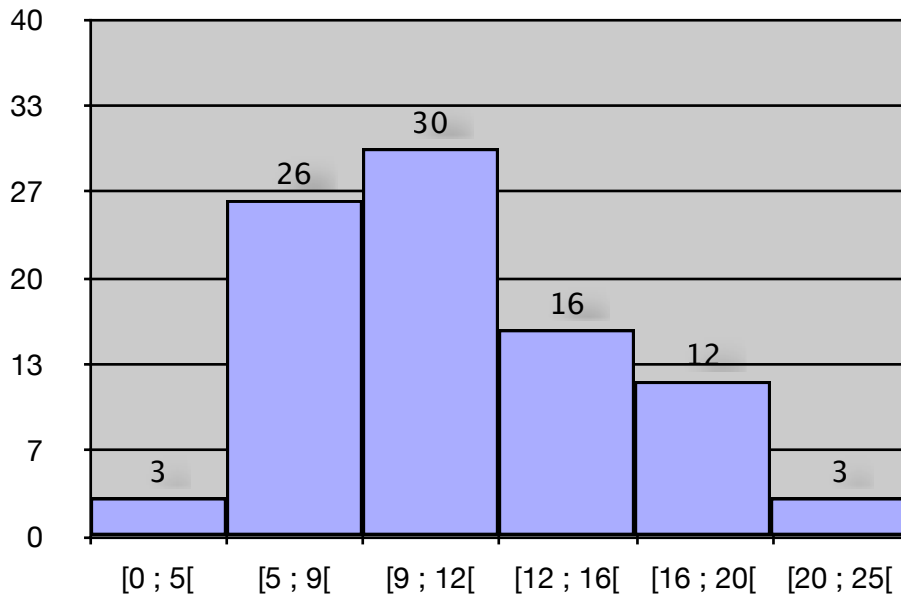


学号	名	拼音	Prénom Français	习题	I.1.a	I.1.b	I.1.c	I.2.a	I.2.b	II.1	II.2	II.3	II.4	III.1	III.2.a	III.2.b	III.3	III.4.a	III.4.b	III.5.a	III.5.b	III.6.a	III.6.b	III.6.c	III.6.d	Rédaction Présentation	Total	Total	排名	
			Maximum		0.5	1	1	0.5	2	0.5	2	2	1.5	1	1	1	1	2	1	1	1	2	1	1			25	100		
120341144	张梦迪	Zhang Mengdi	Lola	B	0.5	1	1	0.5	2	0.5	2	2	1.5	1	1	1	1	2	1	1	1	2	1	1		1	26	104	1	
120141402	陈嘉滨	Chen Jiabin	Nathan	C	0.5	1	1	0.5	2	0.5	1.5	2	1.5	1	1	0.5	1	1	2	1	1	1	2	1	1		1	25	100	2
121142612	姜明杰	Jiang Mingjie	Félix	B	0.5	1	1	0.5	2	0.5	1.5	2	1.5	1	1	1	0.5	1	2	1	1	1	2	1	1	0.5	24.5	98	3	
121044414	刘辰辰	Liu Chenchen	Christian	A	0.5	1	1	0.5	2	0.5	0	2	1.5	0.5	1	1	0.5	1	2	1	0	0	0.5	1	1	0.5	19	76	4	
120545214	李佳美	Li Jiamei	Emma	B	0	1	1	0.5	1	0.5	2	2	1.5	1	1	1	0	1	2	1	1	0	0	1	0	0.5	19	76	4	
120441404	代超瑾	Dai Chaofan	Paul-Henri	D	0.2	1	1	0.3	0.8	0.4	2	1.8	1.5	0.8	1	1	0.5	1	1	1	1	0	0	1	1	0	18.3	73.2	6	
126041102	高金伟	Gao Jinwei	Georges	A	0.3	1	1	0.5	1	0.5	1.8	2	0	0.9	1	1	0	1	2	1	1	0	2	0	0	0	18	72	7	
120141130	袁睿坤	Yuan Ruikun	Maurice	A	0.5	0.8	1	0.5	1	0.5	0.5	2	1.5	1	1	1	0.5	1	0	1	1	0	1	1	1	0	17.8	71.2	8	
120146510	姜建	Jiang Jian	Philippe	C	0.5	1	1	0.5	1.5	0.5	1	2	0	1	1	1	0.5	1	1	1	1	1	0	0	1	0	17.5	70	9	
121142215	李天迤	Li Tianyi	Eugène	D	0.5	1	1	0.5	1	0.5	1	2	0	1	0	1	0	1	2	1	1	0	2	0	0.5	0.5	17.5	70	9	
126041127	赵中阳	Zhao Zhongyang	Vivien	B	0.5	1	0.5	0.5	2	0.5	2	1.8	0	0.5	1	0.5	0	1	2	1	1	0	0	1	0	0.5	17.3	69.2	11	
120341311	贾紫娇	Jia Zijiao	Elise	D	0.5	1	0.5	0.5	2	0.4	0.5	2	1.5	0.5	0	0.5	0	1	2	1	1	1	1	0	0	0	16.9	67.6	12	
120141326	吴宇豪	Wu Yuhao	Sébastien	D	0.5	1	1	0.5	1	0.5	0.5	2	1.5	0.5	1	1	0.5	1	2	1	1	0	0	0	0	0	16.5	66	13	
121143325	汤吉	Tang Ji	Jonas	B	0.5	1	0.5	0.5	1.5	0.4	1	2	0	1	1	1	0.5	1	2	1	1	0	0	0	0	0.5	16.4	65.6	14	
126041116	吴悦雷	Wu Yuele	Séverin	B	0.5	1	0.8	0.5	2	0.4	2	2	0	0.8	0	0.8	0	1	2	1	1	0	0	0	0	0.5	16.3	65.2	15	
120141625	吴幸星	Wu Xingxing	Didier	A	0	0.8	1	0.5	2	0.5	0	2	1	1	1	1	1	1	2	1	0	0	0	0	0	0	15.8	63.2	16	
120441715	刘祺超	Liu Qichao	Maximilien	C	0.5	1	1	0.5	1.2	0.5	1	1	0	1	1	0.5	1	1	2	1	1	0	0	0	0	0.5	15.7	62.8	17	
126041126	赵震	Zhao Zhen	Axel	A	0.5	1	1	0.5	1.5	0.5	1.5	2	0	1	0	0.7	0	0.8	1.5	1	1	1	0	0	0	0	15.5	62	18	
126041108	刘信睿	Liu Jirui	Marcel	A	0.5	1	0.8	0	0.5	0	1	1	1.5	0.5	1	0.8	0	0.8	1.8	1	0	1	0	1	1	0	15.2	60.8	19	
121142110	胡琪	Hu Qi	Jean-Baptiste	C	0.5	0.8	1	0.5	1.2	0.5	1.8	1.8	0	0.5	0	0.5	0	0.7	1.7	0	0.2	1	0.5	1	1	-0.5	14.7	58.8	20	
120441231	邢仕廷	Xing Shiting	Eddy	C	0.5	1	1	0.5	1	0.5	0	2	0	1	1	0.5	0.3	1	2	1	0.5	0	0	0	0	0	13.8	55.2	21	
120541129	汪武天	Wang Wutian	Étienne	B	0.5	1	1	0.3	1	0.5	0	2	0	0.3	1	1	0.5	0.8	1.5	1	1	0	0	0	0	0	13.4	53.6	22	
120441923	涂昕	Tu Xin	Pierric	C	0.5	1	0.5	0.3	0.8	0.5	0.5	1	1.5	0.8	1	0.8	0.5	1	0.5	1	1	0	0	0	0	0	13.2	52.8	23	
120745104	方力智	Fang Lizhi	Lilian	D	0.3	1	0.5	0.5	1.2	0	0	1	1.5	0.8	0.8	0.5	0.5	0.8	1.5	1	1	0	0	0	0	0	12.9	51.6	24	
120341235	徐泓悦	Xu Hongyue	Véronique	B	0.5	1	0.5	0.5	1.5	0.5	0.5	1	0	1	1	0.5	0	0.8	2	1	0	0	0	0	0	0.5	12.8	51.2	25	
126041104	郭翰卿	Guo Hanqing	Norbert	B	0.5	1	1	0.5	1	0.5	0	1	0	0.5	0	0.5	0	1	2	1	0.8	0	1	0	0	0.5	12.8	51.2	26	
120146128	王梓棋	Wang Ziqi	Sam	D	0	1	0.5	0.5	0.5	0.2	1	1.5	0	0.5	0	0.5	0.5	1	2	1	0	1	0	0	1	0	12.7	50.8	27	
121141319	孟祥宇	Meng Xiangyu	Basile	D	0.5	1	0.7	0.5	1	0.5	0.5	1.5	1.5	0.5	0	0.5	0	0.5	2	1	1	0	0	0	0	-0.5	12.7	50.8	28	
110141403	邓权	Deng Quan	Jules	C	0.5	0.9	1	0.5	1	0.5	0.5	2	0	0.5	0.8	0.5	0	0.8	1	0.8	1	0	0	0	0	0	12.3	49.3	29	
126041118	杨博	Yang Bo	Gauthier	A	0	1	1	0.5	1.5	0.5	0	1	0	0.5	0	0.5	0	0.5	1	1	0.8	1	1.5	0	0	0	12.3	49.3	29	
120341347	朱燕霞	Zhu Yanxia	Johanna	A	0	1	1	0.5	1.3	0.5	0	2	0	0.9	0	0.5	0	0.8	1.5	1	1	0	0	0	0	0	12	48	31	
121142405	单凯旋	Shan Kaixuan	Michel	A	0.5	1	1	0.5	2	0.5	0	1	0	1	0	1	0	0.9	1.9	0	0	0	0	0	0	0.5	11.8	47.2	32	
126041105	霍百明	Huo Baiming	Herbert	A	0.5	0.8	1	0.4	1	0	1	2	0	0.5	0.5	0.8	0.2	0.5	1.5	1	0	0	0	0	0	0	11.7	46.8	33	
126041106	季春明	Ji Chunming	Joël	B	0.5	1	1	0.5	1	0	0.5	1	1.5	0.2	0	0.5	0	1	2	0.5	0.5	0	0	0	0	0	11.7	46.8	33	
120545123	苏璇	Su Xuan	Emilie	D	0.5	1	0.8	0.5	0.8	0.3	0.5	2	0	0.8	1	1	0	0.3	0	1	1	0	0	0	0	0	11.5	46	35	
126041115	王峥一	Wang Zhengyi	Icare	A	0.5	1	0.5	0.5	1	0.5	0.5	1	0	0.5	0.5	0.2	1	2	1	0	0	0	0	0	0	0	11.2	44.8	36	
120241126	王泉	Wang Quan	Frédéric	C	0.5	1	0.5	0.3	0	0.5	0	1.2	1.5	0.5	0	0.5	0	1	1.5	1	1	0	0.2	0	0	0	11.2	44.8	36	
120541239	叶小鸽	Ye Xiaoge	Angèle	C	0	0.8	0.5	0.4	0.5	0	0.5	1.5	0	0.5	1	0.5	0	1	2	1	1	0	0	0	0	0	11.2	44.8	36	
120541330	王慧	Wang Hui	Capucine	C	0.5	0.9	1	0.5	0.5	0.5	0.5	1	0	1	1	0.8	0	1	2	0	0	0	0	0	0	0	11.2	44.8	36	
120541128	陶然	Tao Ran	Delphine	D	0.5	1	1	0.5	0.7	0.5	0.5	1	1	0.5	0	0.8	0	1	1.7	0	0	0	0	0	0	0.5	11.2	44.8	36	
120741125	曲亮武	Qu Liangwu	Mathias	B	0.5	1	1	0.4	0	0.5	0	1.8	0	1	0.8	0.5	0	0.8	1.8	0	0	0	0	0	1	0	11.1	44.4	41	
120141631	苑文学	Yuan Wenxue	Simon	A	0.5	1	0.7	0.5	1	0.3	0	2	0.2	0.3	0.5	0.3	0	0.8	0.5	1	0.5	1	0	0	0	0	11.1	44.4	41	
121041119	刘梦瑶	Liu Mengyao	Margot	D	0.5	1	1	0	0.5	0.5	0.5	1.5	0	0.5	0	0.5	0	1	2	0	1	0	0	0	1	-0.5	11	44	43	
120440418	牛邦玉	Niu Bangyu	Alexis	B	0.5	1	1	0.5	1	0.5	0.5	1.8	0	1	0	0.5	0	0.5	1	1	0	0	0	0	0	0	10.8	43.2	44	
126041114	王兆爽	Wang Zhaoshuang	Jérémie	B	0.5	1	0.5	0	0	0	0	1.7	0	0.2	0	0.5	0	1	1.5	1	1	0.8	0	0	1	0	10.7	42.8	45	
126041120	尹艺靓	Yin Yiliang	Flora	B	0.5	0.5	1	0.5	1	0	1	2	0	0.5	0	0.5	0	1	2	0	0	0	0	0	0	0	10.5	42	46	
120441703	程一凡	Cheng Yifan	Cédric	A	0.5	1	0.7	0.3	1	0.5	1	2	0	0.3	0	0.8	0	0.8	1.5	0	0	0	0	0	0	0	10.4	41.6	47	
120541231	王泽淳	Wang Zeting	Tatiana	C	0.5	1	1	0.4	1	0.5	0	2	0	0.3	1	0.5	0	0.2	0	1	1	0	0	0	0	0	10.4	41.6	47	
120543144	赵婕宇	Zhao Jieyu	Méline	C	0.5	1	1	0	0.5	0.5	0.5	1.8	0	0.5	0	1	0	0.5	1.5	1	0	0	0	0	0	0	10.3	41.2	49	
120141328	徐致远	Xu Zhiyuan	Rodrique	D	0	0.8	1	0.2	1	0.5	2	2	0	0.5	0	0.8	0	1	0.5	0	0	0	0	0	0	0	10.3	41.2	49	
120141735	张岩	Zhang Yan	Raphaël	D	0.5	0.9	1	0.5	1.3	0.5	0.5	1	0	0.5	0	0.5	0	1	2	0	0	0	0	0	0	0	10.2	40.8	51	
126041117	武伟璐	Wu Weilu	Monique	A	0.5	1	1	0.4	0.5	0.5	0.5	2	0	1	1	0.7	0	0	0	1	0	0	0	0	0	0	10.1	40.4	52	
126041103	高伟成	Gao Weicheng	Alain	B	0	1	0.8	0	1	0.3	1	1	0	0.5	0	0.5	0	1	1	0	0	1	1	0	0	0	10.1	40.4	52	
120543141	余智慧	Yu Zhihui	Paloma	A	0.5	1	1	0.5	1.5	0.5	0	0.5	0	1	1	1	0.5	0.5	0	0	0	0	0	0	0	0.5	10	40	54	
126041125	赵芮	Zhao Rui	Barbara	A	0.5	1	1	0	0.5	0.5	0.8	1	0	0.5	0	0.5	0	1	1.7	1	0	0	0	0	0	0	10</			

Intervalle	Effectifs
[0 ; 5[	3
[5 ; 9[	26
[9 ; 12[	30
[12 ; 16[	16
[16 ; 20[	12
[20 ; 25[	3
<b>Total</b>	<b>90</b>

### Répartition



	Groupe A	Groupe B	Groupe C	Groupe D
<b>Moyenne (平均分)</b>	11.2	12.2	10.4	11.2
<b>Moyenne générale</b>	11.3			
<b>Écart-type (标准差)</b>	4.6			