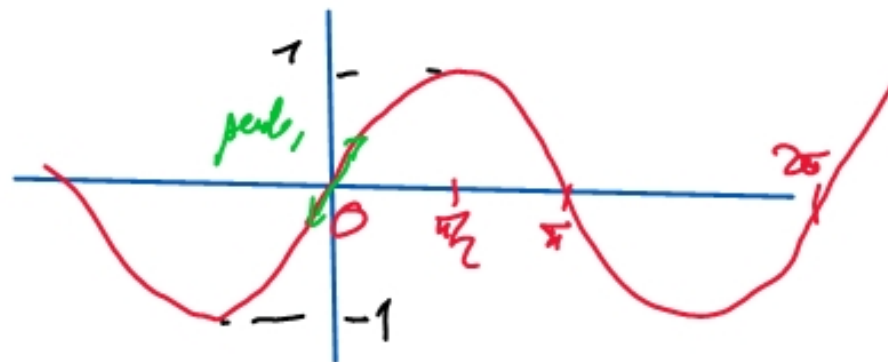


review

①  $\sin(b-a) = \cos(a)\sin(b) - \cos(b)\sin(a)$

② dessin de sin



③ formule qui permet d'avancer dans le triangle de Pascal  
$$\binom{n}{p} + \binom{n}{p+1} = \binom{n+1}{p+1}$$

④ formule du binôme  
$$(a+b)^n = \sum_{p=0}^n \binom{n}{p} a^p b^{n-p} = \sum_{p=0}^n \binom{n}{p} a^{n-p} b^p$$

⑤ Somme partielle géométrique  
$$1 + x + \dots + x^n = \frac{x^{n+1} - 1}{x - 1} \text{ qd } x \neq 1 \quad (n+1 \text{ qd } x=1)$$

$$\textcircled{1} \quad \frac{12}{9} = \frac{\cancel{3} \times 4}{\cancel{3} \times 3} = \frac{4}{3} \quad \frac{84}{30} = \frac{2^2 \cdot 3 \cdot 7}{2 \cdot 3 \cdot 5} = \frac{2 \cdot 7}{5} = \frac{14}{5}$$

$$\begin{array}{r|l} 84 & 2 \\ 42 & 2 \\ 21 & 3 \\ 7 & 7 \end{array}$$

$$\begin{array}{r|l} 30 & 2 \\ 15 & 3 \\ 5 & 5 \end{array}$$

$$84 = 2^2 \cdot 3 \cdot 7$$

$$30 = 2 \cdot 3 \cdot 5$$

$$\textcircled{2} \quad \frac{2}{5} - \frac{1}{3} = \frac{6}{15} - \frac{5}{15} = \frac{1}{15}$$

$$\frac{1}{2} - \frac{5}{4} + \frac{3}{8} = \frac{4 - 10 + 3}{8} = -\frac{3}{8}$$

$$\textcircled{4} \quad A = \frac{\frac{3}{4}}{\frac{2}{5}} = \frac{3}{4} \times \frac{5}{2} = \frac{3}{2 \times 4} = \frac{3}{8}$$

$$B = \frac{-3}{\frac{2}{5}} = -3 \times \frac{5}{2} = -\frac{15}{2}$$

$$C = \frac{5}{\frac{4}{5}} = 5 \times \frac{5}{4} = \frac{25}{4}$$

$$\neq D = \frac{\frac{5}{4}}{5} = \frac{5}{4} \times \frac{1}{5} = \frac{1}{4}$$

$$\textcircled{6} \quad a = \frac{1}{1 + \frac{1}{2 + \frac{1}{3+a}}} = \frac{1}{1 + \frac{1}{\frac{6+2a+1}{3+a}}} = \frac{1}{1 + \frac{3+a}{7+2a}}$$

$$= \frac{1}{\frac{7+2a+3+a}{7+2a}} = \frac{1}{\frac{10+3a}{7+2a}} = \frac{7+2a}{10+3a} = a$$

$$\begin{array}{r|l} 148 & 2 \\ 74 & 2 \\ \hline 37 & 37 \end{array}$$

⇓

$$7+2a = a(10+3a)$$

$$3a^2 + 8a - 7 = 0$$

$$\Delta = 64 + 84 = 148 = 2^2 \cdot 37$$

$$a = \frac{-8 \pm 2\sqrt{37}}{6} = \frac{2(-4 \pm \sqrt{37})}{2 \times 3}$$


$$(5) \frac{\left(\frac{2}{3} - \frac{1}{2}\right) \times \frac{12}{5}}{\left(\frac{1}{10} - 2\right) \times 3} = \frac{\frac{4-3}{6} \times \frac{12}{5}}{\frac{1-20}{10} \times 3} = \frac{\frac{1}{6} \times \frac{12}{5}}{\frac{-19}{10} \times 3} = \frac{\frac{2}{5}}{\frac{-19 \times 3}{10}}$$

$$= -\frac{2}{5} \times \frac{10}{3 \times 19} = -\frac{4}{57}$$

# les Complexes

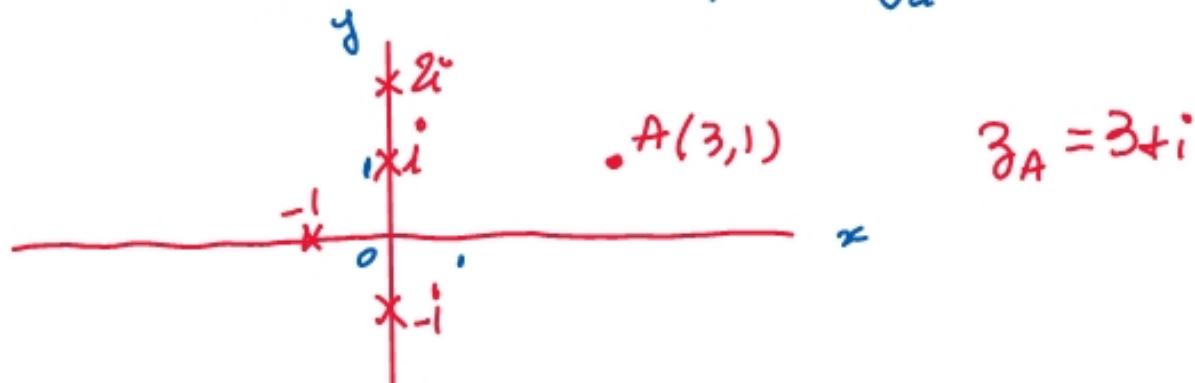
## I Généralités

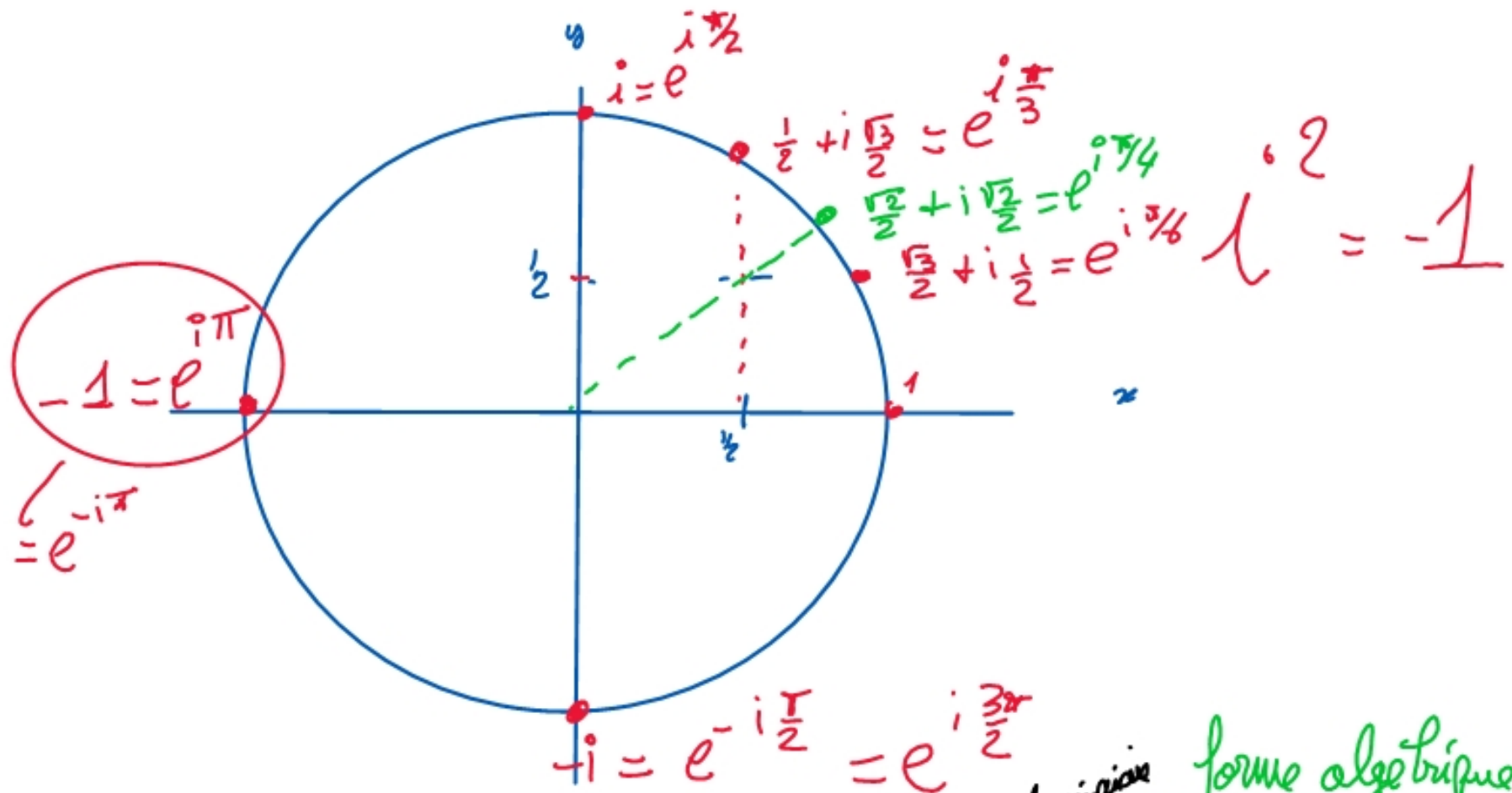
$$\mathbb{C} = \{a + ib \text{ où } (a, b) \in \mathbb{R}^2\}$$

def: L'image du complexe  $a + ib$  est le point  $A$  de coordonnées  $(a, b)$   
ou le vecteur  $\vec{u}$  

def: L'affixe du point  $A(a, b)$  est le complexe  $z_A = a + ib$

L'affixe du vecteur  $\vec{u}(a, b)$  est le complexe  $z_{\vec{u}} = a + ib$





Un nombre complexe s'écrit soit  $a + ib$  partie réelle partie imaginaire / forme algébrique ou cartésienne  
 soit  $re^{i\theta}$  argument / forme trigonométrique ou exponentielle  
Module

$\text{Re}(z) = a$  partie réelle

$$z = a + ib \rightarrow \text{Im}(z) = b$$

$$z = r e^{i\theta}$$

argument  $\in ]-\pi, \pi]$

Module de  $z$  noté

$$|z| = \sqrt{a^2 + b^2}$$

se rassemble à des valeurs absolues

$$i^2 = -1$$



$$e^{i\theta} = \cos\theta + i\sin\theta$$



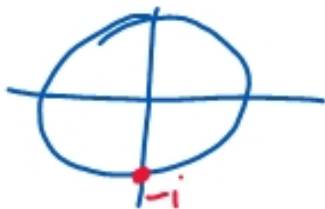
ex: Donner la forme algébrique des complexes suivants :

$$z_1 = 2e^{i\pi/3} ; z_2 = 3e^{-i\pi/2} ; z_3 = 2e^{i\theta} ; z_4 = z_1 \times z_2$$

$$z_1 = 2\left(\cos\frac{\pi}{3} + i\sin\frac{\pi}{3}\right) = 2\left(\frac{1}{2} + i\frac{\sqrt{3}}{2}\right) = \underline{1 + i\sqrt{3}}$$

$$z_2 = 3e^{-i\pi/2}$$

$$= 3 \times (-i) = \underline{-3i}$$



$$z_3 = 2(\cos\theta + i\sin\theta) = \underline{2\cos\theta + 2i\sin\theta}$$

$$z_1 \times z_2 = (1 + i\sqrt{3})(-3i)$$

$$= \underline{3\sqrt{3} - 3i}$$

$$z_1 \times z_2 = 2e^{i\pi/3} \times 3e^{-i\pi/2}$$

$$= 6e^{i(\frac{\pi}{3} - \frac{\pi}{2})}$$

$$= 6e^{-i\pi/6}$$

ex 2: Mettre sous forme algébrique  $z_1 = e^{i\pi/3}$ ;  $z_2 = e^{i\pi/4}$ , puis  $\frac{z_1}{z_2}$

En déduire la valeur de  $\cos \frac{\pi}{12}$  et  $\sin \frac{\pi}{12}$



$$e^{i\pi/3} = \frac{1}{2} + i\frac{\sqrt{3}}{2}$$

$$e^{i\pi/4} = \frac{\sqrt{2}}{2} + i\frac{\sqrt{2}}{2}$$

$$\frac{z_1}{z_2} = \frac{e^{i\pi/3}}{e^{i\pi/4}} = e^{i(\pi/3 - \pi/4)} = e^{i\frac{4\pi - 3\pi}{12}} = e^{i\frac{\pi}{12}} = \cos\left(\frac{\pi}{12}\right) + i\sin\left(\frac{\pi}{12}\right)$$

$$\begin{aligned} \text{et } \frac{z_1}{z_2} &= \frac{\frac{1}{2} + i\frac{\sqrt{3}}{2}}{\frac{\sqrt{2}}{2} + i\frac{\sqrt{2}}{2}} = \frac{(\frac{1}{2} + i\frac{\sqrt{3}}{2})(\frac{\sqrt{2}}{2} - i\frac{\sqrt{2}}{2})}{(\frac{\sqrt{2}}{2} + i\frac{\sqrt{2}}{2})(\frac{\sqrt{2}}{2} - i\frac{\sqrt{2}}{2})} = \frac{\frac{\sqrt{3}}{4} + i\frac{\sqrt{6}}{4} - i\frac{\sqrt{2}}{4} + \frac{\sqrt{6}}{4}}{(\frac{\sqrt{2}}{2})^2 + (\frac{\sqrt{2}}{2})^2} \\ &= \frac{\frac{\sqrt{3} + \sqrt{6}}{4} + i\frac{\sqrt{6} - \sqrt{2}}{4}}{\frac{2}{4} + \frac{2}{4}} = \frac{\frac{\sqrt{3} + \sqrt{6}}{4} + i\frac{\sqrt{6} - \sqrt{2}}{4}}{1} \\ &= \cos\left(\frac{\pi}{12}\right) + i\sin\left(\frac{\pi}{12}\right) \end{aligned}$$

ex 3: Donner la forme trigo de

$$z_1 = 1 - i \quad z_2 = \sqrt{3} + i \quad z_1 \times z_2 \quad z_3 = 3 + 4i$$

méthode: (1°) on calcule le module

(2°) on met le module en facteur

(3°) on reconnaît l'argument dans le cercle trigo

(qd on le reconnaît pas, formule avec arctan)

$$z_1 = 1 - i \quad |z_1| = \sqrt{1^2 + (-1)^2} = \sqrt{2}$$

$$z_1 = \sqrt{2} \left( \frac{1}{\sqrt{2}} - i \frac{1}{\sqrt{2}} \right) = \sqrt{2} \left( \frac{\sqrt{2}}{2} - i \frac{\sqrt{2}}{2} \right) = \sqrt{2} e^{-i\pi/4}$$



$$z_2 = \sqrt{3} + i \quad |z_2| = \sqrt{3^2 + 1^2} = \sqrt{4} = 2 \quad ; \quad z_2 = 2 \left( \frac{\sqrt{3}}{2} + i \frac{1}{2} \right) = 2 e^{i\pi/6}$$

$$z_1 \times z_2 = \sqrt{2} e^{-i\pi/4} \times 2 e^{i\pi/6} = 2\sqrt{2} e^{i(\frac{\pi}{6} - \frac{\pi}{4})} = 2\sqrt{2} e^{i \frac{2\pi - 3\pi}{12}}$$

$$= 2\sqrt{2} e^{-i\pi/12}$$

$$z_3 = 3 + 4i \quad |z_3| = \sqrt{3^2 + 4^2} = \sqrt{9 + 16} = \sqrt{25} = 5$$

$$z_3 = 5 \left( \frac{3}{5} + i \frac{4}{5} \right) = 5 (\cos(\theta) + i \sin(\theta))$$

$$\tan(\theta) = \frac{\sin \theta}{\cos \theta} = \frac{4/5}{3/5} = \frac{4}{3} \quad \theta = \arctan\left(\frac{4}{3}\right)$$

$$z_3 = 5 e^{i \arctan\left(\frac{4}{3}\right)}$$

$\square$  L'argument de  $a + ib$  est  $\begin{cases} \arctan\left(\frac{b}{a}\right) & \text{qd } a > 0 \\ \arctan\left(\frac{b}{a}\right) + \pi & \text{qd } a < 0 \end{cases}$

## II Conjugaison

def: Le conjugué de  $z = a + ib$  est  $\bar{z} = a - ib$

on l'utilise pour les divisions :

$$\frac{2+3i}{1+4i} = \frac{(2+3i)(1-4i)}{(1+4i)(1-4i)} = \frac{2 - 8i + 3i + 12}{1+16} = \frac{14 - 5i}{17}$$

$$z \cdot \bar{z} = (a+ib)(a-ib) = a^2 - (ib)^2 = a^2 + b^2$$

$$z \cdot \bar{z} = a^2 + b^2 = |z|^2$$

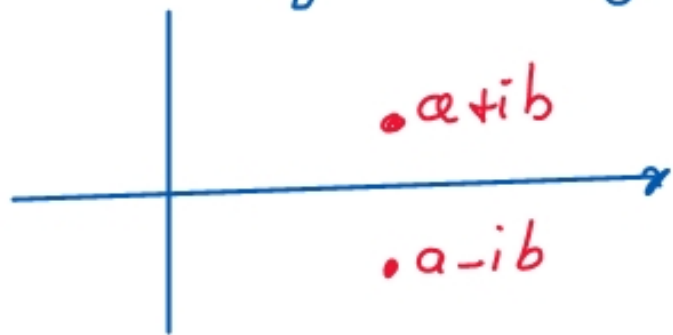
module au carré

remarque :  $z = \bar{z}$   $\Leftrightarrow a + ib = a - ib \Leftrightarrow 2ib = 0 \Leftrightarrow b = 0 \Leftrightarrow z$  est réel

Formules  $\overline{z+z'} = \overline{z} + \overline{z'}$

$$\overline{z \times z'} = \overline{z} \times \overline{z'}$$

$$\overline{\frac{z}{z'}} = \frac{\overline{z}}{\overline{z'}}$$



L'image du conjugué est la symétrique / l'axe des  $x$  de  $a+ib$