

Tetris

(intro Kalinka)

basse

arr. F[ens]foire

Kalinka

Largo **D7**

Adagio

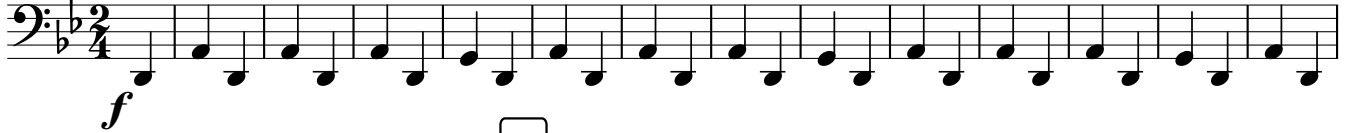
G_M **D⁷**
Andante

Allegretto

G_M **D⁷**
Allegro

Vivace

G_M **D⁷**
Presto



G_M

A

G_M **D⁷**

G_M

D⁷

G_M

C_M



G_M

D⁷

1 **G_M**

2 **G_M**

G_M

Fine Vivace

G_M

F^{#dim} **G_M**

D⁷



G_M
Presto

F^{#dim}
Presto



D.S. al Fine