

Medley Marley partie saxo

Intro Jammin

Jammin

Alto Saxophone



12



19



Transition 1

26



I shot the sherif A

33



I shot the sherif B

38



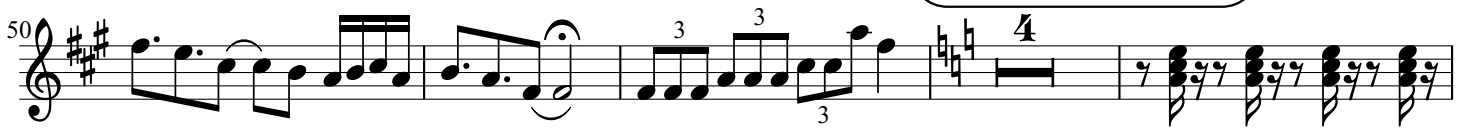
Transition 2

44



Could you be loved

50



58



61 

64 

Get Up Stand Up

67 

71 

Iron Lion Zion

76 

81 

Medley Marley Souba

Intro Jammin

Jammin

B \flat Tuba

B \flat Tu.

B \flat Tu.

B \flat Tu.

B \flat Tu.

I Shot The Sheriff A

B \flat Tu.

I Shot The Sheriff B

B \flat Tu.

Could You Be Loved (après 1

B \flat Tu.

B \flat Tu.

56
B \flat Tu.

59
B \flat Tu.

62
B \flat Tu.

Get Up Stand Up

66
B \flat Tu.

71
B \flat Tu.

mes)

Medley Marley Trombone

Intro Jammin

Trombone

Jammin

5

10

Transition 1

15

I Shot The Sherif A

21

I Shot the Sherif B

26

30

Transition 2

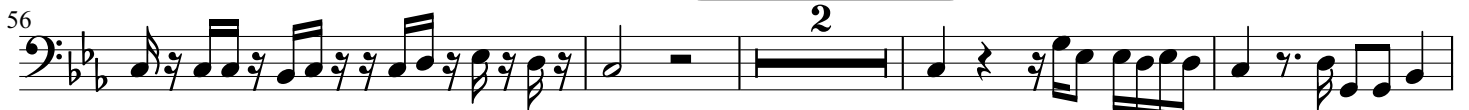
34

Could You Be Loved

38



Get Up Stand Up



Iron Lion Zion



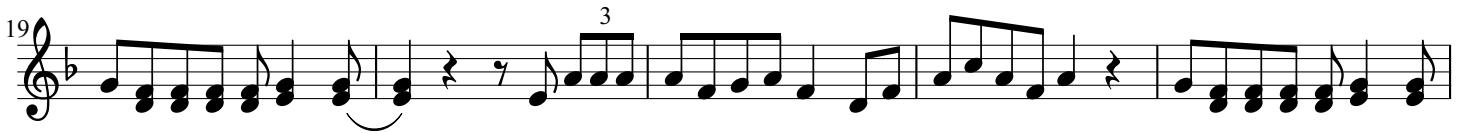
Medley Marley Trompette Sib

Intro Jammin

B♭ Trumpet



Jammin



Transition 1



I shot the sherif A

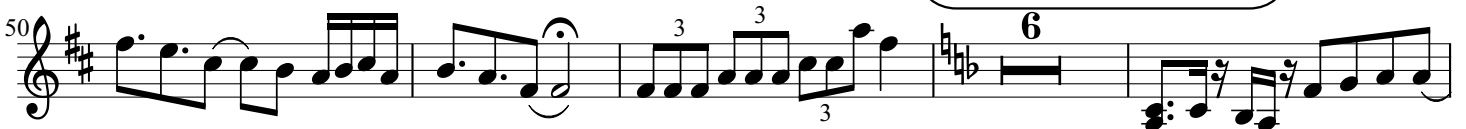
I shot the sherif B



Transition 2



Could You Be Loved



60 3

Get Up Stand Up

70

73

Iron Lion Zion

76

80

Medley Marley Ut

Intro Jammin

Jammin

Musical notation for the Intro Jammin section, measures 1-12. The key signature is B-flat major (two flats) and the time signature is 4/4. The notation includes a treble clef, a key signature of two flats, and a time signature of 4/4. It features a melodic line with triplets and rests, and a bass line with chords and eighth notes.

Musical notation for the Jammin section, measures 13-19. The notation continues the melodic and bass lines from the previous section, featuring various chord voicings and rhythmic patterns.

Musical notation for the Jammin section, measures 20-26. The notation continues the melodic and bass lines, showing a progression of chords and rhythmic figures.

Transition 1

Musical notation for Transition 1, measures 27-32. The notation features a melodic line with eighth notes and a bass line with chords, leading into the next section.

I Shot The Sheriff A

Musical notation for I Shot The Sheriff A, measures 33-37. The notation includes a treble clef, a key signature of two flats, and a time signature of 4/4. It features a melodic line with eighth notes and a bass line with chords.

I Shot The Sheriff B

Musical notation for I Shot The Sheriff B, measures 38-43. The notation continues the melodic and bass lines, featuring a progression of chords and rhythmic patterns.

Transition 2

Musical notation for Transition 2, measures 44-49. The notation features a melodic line with eighth notes and a bass line with chords, leading into the next section.

Could You Be Loved

Musical notation for Could You Be Loved, measures 50-57. The notation includes a treble clef, a key signature of two flats, and a time signature of 4/4. It features a melodic line with eighth notes and a bass line with chords and triplets.

Musical notation for Could You Be Loved, measures 58-63. The notation continues the melodic and bass lines, featuring a progression of chords and rhythmic patterns.

61

64

Get Up Stand Up

67

71

Iron Lion Zion

76

81