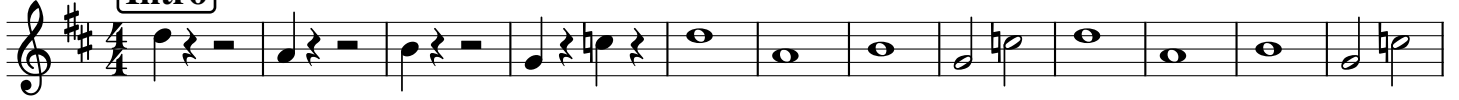


# Saxophone Baryton Un monde sans danger

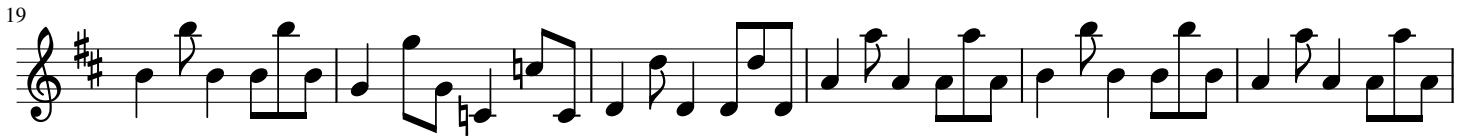
Arr Tim

♩ = 120

## Intro



## Verse 1



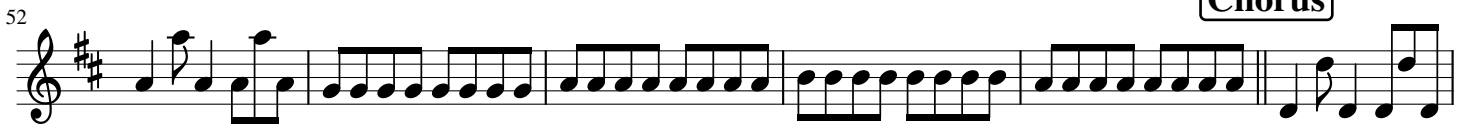
## Chorus



## Verse 2



## Chorus



Bridge

72

Musical notation for the Bridge section, starting at measure 72. It features a treble clef, a key signature of one sharp (F#), and a 4-measure rest at the beginning. The melody consists of eighth and quarter notes.

Chorus'

81

Musical notation for the Chorus' section, starting at measure 81. It features a treble clef, a key signature of one sharp (F#), and a melody of eighth and quarter notes.

88

Musical notation for the continuation of the Chorus' section, starting at measure 88. It features a treble clef, a key signature of one sharp (F#), and a melody of eighth and quarter notes.

Outro

95

Musical notation for the Outro section, starting at measure 95. It features a treble clef, a key signature of one sharp (F#), and ends with a 5-measure rest.