

# Saxophone Alto

# Brooklyn

Youngblood BB  
version F[ens]foire

Arr. Loupio, PetitChef & RBK  
+ Enzo, Alex (2022)

♩ = 100

4



*mf*

**A**



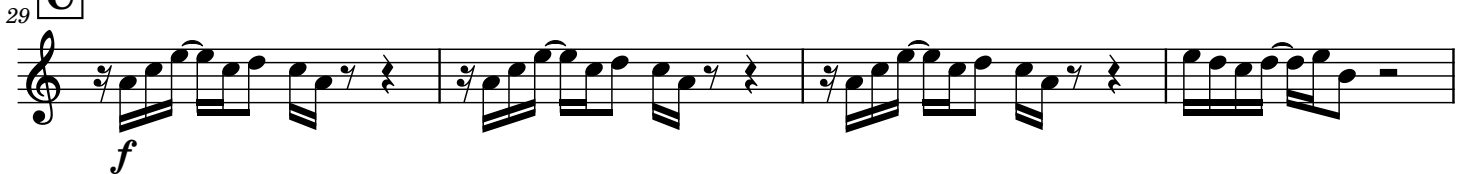
**B**



*mf*



**C**



*f*



**A**



**C**



*f*



52

SOLO SOUBA

Musical staff for SOLO SOUBA, measures 52-59. The staff begins with a treble clef and a key signature of one sharp (F#). The first measure contains a complex rhythmic pattern of eighth and sixteenth notes. The following seven measures consist of eighth-note pairs with rests, alternating between F# and G notes.

60

SOLO BATTERIE

Musical staff for SOLO BATTERIE, measures 60-67. The staff begins with a treble clef and a key signature of one sharp (F#). The first measure contains a complex rhythmic pattern of eighth and sixteenth notes. The following seven measures consist of eighth-note pairs with rests, alternating between F# and G notes.

68

Musical staff for SOLO BATTERIE, measures 68-73. The staff begins with a treble clef and a key signature of one sharp (F#). The first measure contains a complex rhythmic pattern of eighth and sixteenth notes. The following five measures consist of eighth-note pairs with rests, alternating between F# and G notes. The staff concludes with a complex rhythmic pattern of eighth and sixteenth notes. Dynamics markings *mf* and *ff* are present below the staff.

74

Musical staff for SOLO BATTERIE, measures 74-78. The staff begins with a treble clef and a key signature of one sharp (F#). The first measure contains a complex rhythmic pattern of eighth and sixteenth notes. The following four measures consist of eighth-note pairs with rests, alternating between F# and G notes. The staff concludes with a complex rhythmic pattern of eighth and sixteenth notes. A dynamic marking *f* is present below the staff.

79

Musical staff for SOLO BATTERIE, measures 79-82. The staff begins with a treble clef and a key signature of one sharp (F#). The first measure contains a complex rhythmic pattern of eighth and sixteenth notes. The following three measures consist of eighth-note pairs with rests, alternating between F# and G notes. The staff concludes with a complex rhythmic pattern of eighth and sixteenth notes.

83

Musical staff for SOLO BATTERIE, measures 83-86. The staff begins with a treble clef and a key signature of one sharp (F#). The first measure contains a complex rhythmic pattern of eighth and sixteenth notes. The following three measures consist of eighth-note pairs with rests, alternating between F# and G notes. The staff concludes with a complex rhythmic pattern of eighth and sixteenth notes.