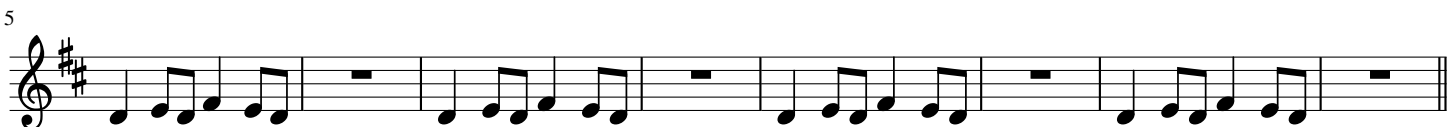


Trompette en Sib

Outta Road

Naâman

Arr. Tim



13 **Verse 1**



21 **Chorus**



26 **Trumpet Time**



30 **Verse 2**



38 **Chorus**



46 **Bridge 1**



52

Bridge 2

Musical notation for Bridge 2, measures 52-57. The key signature is one sharp (F#) and the time signature is 4/4. The melody consists of eighth and quarter notes with rests.

58

Chorus

Musical notation for Chorus, measures 58-63. The key signature is one sharp (F#) and the time signature is 4/4. The melody features eighth notes, quarter notes, and quarter rests.

64

Musical notation for Chorus, measures 64-67. The key signature is one sharp (F#) and the time signature is 4/4. The melody continues with eighth and quarter notes.

68

Musical notation for Chorus, measures 68-69. The key signature is one sharp (F#) and the time signature is 4/4. The melody ends with a quarter note and a quarter rest, followed by a double bar line.