

Trompette en Si \flat

Diggy Diggy Hole

Yogscast
Arr. : R2A/Loupio

♩ = 80 4 ♩ = 120 **A**

break perc

11 **B** %

p *mf*

20 **C**

f break perc *f*

28 Fine 1. 4

36 **D**

44 **E** 8 D.S. al Fine

Trombone

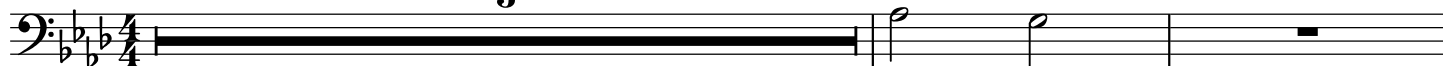
Diggy Diggy Hole

Yogscast
Arr. : R2A/Loupio

♩ = 80

3

♩ = 120



break perc

6

A



13

B %



21

C



28

Fine



36

D

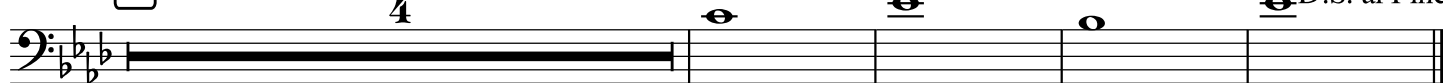
2.



44

E

4



p

D.S. al Fine

Clarinette en Si \flat

Diggy Diggy Hole

Yogscast
Arr. : R2A/Loupio

♩ = 80 4 ♩ = 120 **A**

break perc

13 **B** %

p *mf*

19 **C**

f break perc

28 *f* Fine

1. 4

D

2.

44 **E** D.S. al Fine

p

Saxophone Alto

Diggy Diggy Hole

Yogscast
Arr. : R2A/Loupio

$\text{♩} = 80$ **2** $\text{♩} = 120$ **A**

break perc

B % *p* > > *mf*

C *f* < break perc

D Fine 1. 2.

E *p* D.S. al Fine

Saxophone Baryton

Diggy Diggy Hole

Yogscast
Arr. : R2A/Loupio

♩ = 80 ♩ = 120

break perc

Detailed description: This staff contains the introduction of the piece. It starts with a tempo of 80 bpm and features a series of eighth-note triplets. At the end of the staff, there is a sharp sign on a note and the instruction 'break perc'.

6 **A**

Detailed description: This staff is labeled 'A' and contains a melodic phrase starting with a repeat sign. It features several eighth-note triplets and a dynamic marking of *mf*.

14 **B** %

p *mf*

Detailed description: This staff is labeled 'B' and includes a repeat sign. It begins with a dynamic marking of *p* (piano) and later changes to *mf* (mezzo-forte). It contains eighth-note triplets and accents.

21 **C**

f break perc *f*

Detailed description: This staff is labeled 'C' and features a dynamic marking of *f* (forte). It includes a 'break perc' instruction and continues with eighth-note triplets.

28 **Fine**

f

Detailed description: This staff is labeled 'D' and ends with a double bar line and the word 'Fine'. It features a dynamic marking of *f* and eighth-note triplets.

32 **D**

1. 2.

Detailed description: This staff is labeled 'E' and contains a first and second ending. It features eighth-note triplets and a dynamic marking of *f*.

38 **E** 8 D.S. al Fine

Detailed description: This staff is labeled 'F' and includes a dynamic marking of *f*. It features eighth-note triplets and ends with a double bar line and the instruction '8 D.S. al Fine'.

♩ = 80

♩ = 120

8

break percu

6

A

8

14

B

8

f

break percu

24

C

8

f

Fine

32

1.

8

36

2.

D

E

4

p

D.S. al Fine