

# Pokédex

Lilian Besson

January 12, 2018

## Contents

<b>1 #1 : Bulbasaur</b>	<b>1</b>
<b>2 #2 : Ivysaur</b>	<b>2</b>
<b>3 #3 : Venusaur</b>	<b>3</b>
<b>4 #4 : Charmander</b>	<b>4</b>
<b>5 #5 : Charmeleon</b>	<b>5</b>
<b>6 #6 : Charizard</b>	<b>6</b>
<b>7 #7 : Squirtle</b>	<b>7</b>
<b>8 #8 : Wartortle</b>	<b>8</b>
<b>9 #9 : Blastoise</b>	<b>9</b>
<b>10 #10 : Caterpie</b>	<b>10</b>
<b>11 #11 : Metapod</b>	<b>11</b>
<b>12 #12 : Butterfree</b>	<b>12</b>
<b>13 #13 : Weedle</b>	<b>13</b>
<b>14 #14 : Kakuna</b>	<b>14</b>
<b>15 #15 : Beedrill</b>	<b>15</b>

<b>16 #16 : Pidgey</b>	<b>16</b>
<b>17 #17 : Pidgeotto</b>	<b>17</b>
<b>18 #18 : Pidgeot</b>	<b>18</b>
<b>19 #19 : Rattata</b>	<b>19</b>
<b>20 #20 : Raticate</b>	<b>20</b>
<b>21 #21 : Spearow</b>	<b>21</b>
<b>22 #22 : Fearow</b>	<b>22</b>
<b>23 #23 : Ekans</b>	<b>23</b>
<b>24 #24 : Arbok</b>	<b>24</b>
<b>25 #25 : Pikachu</b>	<b>25</b>
<b>26 #26 : Raichu</b>	<b>26</b>
<b>27 #27 : Sandshrew</b>	<b>27</b>
<b>28 #28 : Sandslash</b>	<b>28</b>
<b>29 #29 : Nidoran</b>	<b>29</b>
<b>30 #30 : Nidorina</b>	<b>30</b>
<b>31 #31 : Nidoqueen</b>	<b>31</b>
<b>32 #32 : Nidoran</b>	<b>32</b>
<b>33 #33 : Nidorino</b>	<b>33</b>
<b>34 #34 : Nidoking</b>	<b>34</b>
<b>35 #35 : Clefairy</b>	<b>35</b>
<b>36 #36 : Clefable</b>	<b>36</b>
<b>37 #37 : Vulpix</b>	<b>37</b>

<b>38 #38 : Ninetales</b>	<b>38</b>
<b>39 #39 : Jigglypuff</b>	<b>39</b>
<b>40 #40 : Wigglytuff</b>	<b>40</b>
<b>41 #41 : Zubat</b>	<b>41</b>
<b>42 #42 : Golbat</b>	<b>42</b>
<b>43 #43 : Oddish</b>	<b>43</b>
<b>44 #44 : Gloom</b>	<b>44</b>
<b>45 #45 : Vileplume</b>	<b>45</b>
<b>46 #46 : Paras</b>	<b>46</b>
<b>47 #47 : Parasect</b>	<b>47</b>
<b>48 #48 : Venonat</b>	<b>48</b>
<b>49 #49 : Venomoth</b>	<b>49</b>
<b>50 #50 : Diglett</b>	<b>50</b>
<b>51 #51 : Dugtrio</b>	<b>51</b>
<b>52 #52 : Meowth</b>	<b>52</b>
<b>53 #53 : Persian</b>	<b>53</b>
<b>54 #54 : Psyduck</b>	<b>54</b>
<b>55 #55 : Golduck</b>	<b>55</b>
<b>56 #56 : Mankey</b>	<b>56</b>
<b>57 #57 : Primeape</b>	<b>57</b>
<b>58 #58 : Growlithe</b>	<b>58</b>
<b>59 #59 : Arcanine</b>	<b>59</b>

<b>60 #60 : Poliwag</b>	<b>60</b>
<b>61 #61 : Poliwhirl</b>	<b>61</b>
<b>62 #62 : Poliwrath</b>	<b>62</b>
<b>63 #63 : Abra</b>	<b>63</b>
<b>64 #64 : Kadabra</b>	<b>64</b>
<b>65 #65 : Alakazam</b>	<b>65</b>
<b>66 #66 : Machop</b>	<b>66</b>
<b>67 #67 : Machoke</b>	<b>67</b>
<b>68 #68 : Machamp</b>	<b>68</b>
<b>69 #69 : Bellsprout</b>	<b>69</b>
<b>70 #70 : Weepinbell</b>	<b>70</b>
<b>71 #71 : Victreebel</b>	<b>71</b>
<b>72 #72 : Tentacool</b>	<b>72</b>
<b>73 #73 : Tentacruel</b>	<b>73</b>
<b>74 #74 : Geodude</b>	<b>74</b>
<b>75 #75 : Graveler</b>	<b>75</b>
<b>76 #76 : Golem</b>	<b>76</b>
<b>77 #77 : Ponyta</b>	<b>77</b>
<b>78 #78 : Rapidash</b>	<b>78</b>
<b>79 #79 : Slowpoke</b>	<b>79</b>
<b>80 #80 : Slowbro</b>	<b>80</b>
<b>81 #81 : Magnemite</b>	<b>81</b>

<b>82 #82 : Magneton</b>	<b>82</b>
<b>83 #83 : Farfetch'd</b>	<b>83</b>
<b>84 #84 : Doduo</b>	<b>84</b>
<b>85 #85 : Dodrio</b>	<b>85</b>
<b>86 #86 : Seel</b>	<b>86</b>
<b>87 #87 : Dewgong</b>	<b>87</b>
<b>88 #88 : Grimer</b>	<b>88</b>
<b>89 #89 : Muk</b>	<b>89</b>
<b>90 #90 : Shellder</b>	<b>90</b>
<b>91 #91 : Cloyster</b>	<b>91</b>
<b>92 #92 : Gastly</b>	<b>92</b>
<b>93 #93 : Haunter</b>	<b>93</b>
<b>94 #94 : Gengar</b>	<b>94</b>
<b>95 #95 : Onix</b>	<b>95</b>
<b>96 #96 : Drowzee</b>	<b>96</b>
<b>97 #97 : Hypno</b>	<b>97</b>
<b>98 #98 : Krabby</b>	<b>98</b>
<b>99 #99 : Kingler</b>	<b>99</b>
<b>100#100 : Voltorb</b>	<b>100</b>
<b>101#101 : Electrode</b>	<b>101</b>
<b>102#102 : Exeggcute</b>	<b>102</b>
<b>103#103 : Exeggutor</b>	<b>103</b>

<b>104#104 : Cubone</b>	<b>104</b>
<b>105#105 : Marowak</b>	<b>105</b>
<b>106#106 : Hitmonlee</b>	<b>106</b>
<b>107#107 : Hitmonchan</b>	<b>107</b>
<b>108#108 : Lickitung</b>	<b>108</b>
<b>109#109 : Koffing</b>	<b>109</b>
<b>110#110 : Weezing</b>	<b>110</b>
<b>111#111 : Rhyhorn</b>	<b>111</b>
<b>112#112 : Rhydon</b>	<b>112</b>
<b>113#113 : Chansey</b>	<b>113</b>
<b>114#114 : Tangela</b>	<b>114</b>
<b>115#115 : Kangaskhan</b>	<b>115</b>
<b>116#116 : Horsea</b>	<b>116</b>
<b>117#117 : Seadra</b>	<b>117</b>
<b>118#118 : Goldeen</b>	<b>118</b>
<b>119#119 : Seaking</b>	<b>119</b>
<b>120#120 : Staryu</b>	<b>120</b>
<b>121#121 : Starmie</b>	<b>121</b>
<b>122#122 : Mr.Mime</b>	<b>122</b>
<b>123#123 : Scyther</b>	<b>123</b>
<b>124#124 : Jynx</b>	<b>124</b>
<b>125#125 : Electabuzz</b>	<b>125</b>

<b>126#126 : Magmar</b>	<b>126</b>
<b>127#127 : Pinsir</b>	<b>127</b>
<b>128#128 : Tauros</b>	<b>128</b>
<b>129#129 : Magikarp</b>	<b>129</b>
<b>130#130 : Gyarados</b>	<b>130</b>
<b>131#131 : Lapras</b>	<b>131</b>
<b>132#132 : Ditto</b>	<b>132</b>
<b>133#133 : Eevee</b>	<b>133</b>
<b>134#134 : Vaporeon</b>	<b>134</b>
<b>135#135 : Jolteon</b>	<b>135</b>
<b>136#136 : Flareon</b>	<b>136</b>
<b>137#137 : Porygon</b>	<b>137</b>
<b>138#138 : Omanyte</b>	<b>138</b>
<b>139#139 : Omastar</b>	<b>139</b>
<b>140#140 : Kabuto</b>	<b>140</b>
<b>141#141 : Kabutops</b>	<b>141</b>
<b>142#142 : Aerodactyl</b>	<b>142</b>
<b>143#143 : Snorlax</b>	<b>143</b>
<b>144#144 : Articuno</b>	<b>144</b>
<b>145#145 : Zapdos</b>	<b>145</b>
<b>146#146 : Moltres</b>	<b>146</b>
<b>147#147 : Dratini</b>	<b>147</b>

<b>148#148 : Dragonair</b>	<b>148</b>
<b>149#149 : Dragonite</b>	<b>149</b>
<b>150#150 : Mewtwo</b>	<b>150</b>
<b>151#151 : Mew</b>	<b>151</b>



## 1 #1 : Bulbasaur

A strange seed was planted on its back at birth. A plant sprouts and grows with this Pokémon.

- Pokémon: *Seed.*
- Height: 2' 4".
- Weight: 15 lbs.



Figure 1: *Bulbasaur* (Pokémon number 1).



## 2 #2 : Ivysaur

When the bulb on its back grows large, it appears to lose the ability to stand on its hind legs.

- Pokémon: *Seed*.
- Height: 3' 3".
- Weight: 29 lbs.



Figure 2: *Ivysaur* (Pokémon number 2).



### 3 #3 : Venusaur

The plant blooms when it is absorbing solar energy.  
It stays on the move to seek sunlight.

- Pokémon: *Seed*.
- Height: 6' 7".
- Weight: 221 *lbs*.



Figure 3: *Venusaur* (Pokémon number 3).



## 4 #4 : Charmander

Obviously prefers hot places. When it rains, steam is said to sprout from the tip of its tail.

- Pokémon: *Lizard*.
- Height: 2' 0".
- Weight: 19 lbs.



Figure 4: *Charmander* (Pokémon number 4).



## 5 #5 : Charmeleon

When it swings its burning tail, it elevates the temperature to unbearably high levels.

- Pokémon: *Flame*.
- Height: 3' 7".
- Weight: 42 lbs.



Figure 5: *Charmeleon* (Pokémon number 5).



## 6 #6 : Charizard

Spits fire that is hot enough to melt boulders. Known to cause forest fires unintentionally.

- Pokémon: *Flame*.
- Height: 5' 7".
- Weight: 200 lbs.



Figure 6: *Charizard* (Pokémon number 6).



## 7 #7 : Squirtle

After birth, its back swells and hardens into a shell.  
Powerfully sprays foam from its mouth.

- Pokémon: *Tiny*.
- Height: *1' 8"*.
- Weight: *20 lbs*.



Figure 7: *Squirtle* (Pokémon number 7).



## 8 #8 : Wartortle

Often hides in water to stalk its unwary prey. For swimming fast, it moves its ears to maintain balance.

- Pokémon: *Turtle*.
- Height: 3' 3".
- Weight: 50 lbs.



Figure 8: *Wartortle* (Pokémon number 8).





## 9 #9 : Blastoise

A brutal Pokémon with pressurized water jets on its shell. They are used for high speed tackles.

- Pokémon: *Shellfish*.
- Height: 5' 3".
- Weight: 189 lbs.



Figure 9: *Blastoise* (Pokémon number 9).



## 10 #10 : Caterpie

Its short feet are tipped with suction pads that enable to tirelessly climb slopes and walls.

- Pokémon: *Worm*.
- Height: *1' 0"*.
- Weight: *6 lbs*.



Figure 10: *Caterpie* (Pokémon number 10).



## 11 #11 : Metapod

This Pokémon is vulnerable to attack while its shell is soft, exposing its weak and tender body.

- Pokémon: *Cocoon*.
- Height: 2' 4".
- Weight: 22 *lbs*.



Figure 11: *Metapod* (Pokémon number 11).



## 12 #12 : Butterfree

In battle, it flaps its wings at high speed to release highly toxic dust into the air.

- Pokémon: *Butterfly*.
- Height: *None*.
- Weight: *71 lbs*.

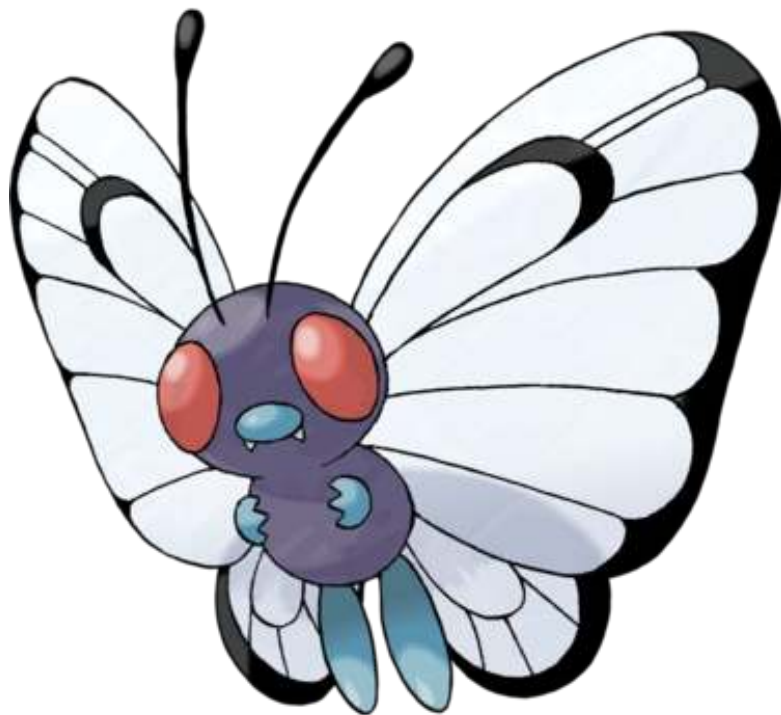


Figure 12: *Butterfree* (Pokémon number 12).



## 13 #13 : Weedle

Often found in forests, eating leaves. It has a sharp venomous stinger on its head.

- Pokémon: *Hairy*.
- Height: 1' 0".
- Weight: 7 lbs.



Figure 13: *Weedle* (Pokémon number 13).



## 14 #14 : Kakuna

Almost incapable of moving, this Pokémon can only harden its shell to protect itself from predators.

- Pokémon: *Cocoon*.
- Height: 2' 0".
- Weight: 22 lbs.



Figure 14: *Kakuna* (Pokémon number 14).



## 15 #15 : Beedrill

Flies at high speed and attacks using its large venomous stingers on its forelegs and tail.

- Pokémon: *Poison*.
- Height: 3' 3".
- Weight: 65 lbs.



Figure 15: *Beedrill* (Pokémon number 15).



## 16 #16 : Pidgey

A common sight in forests and woods. It flaps its wings at ground level to kick up blinding sand.

- Pokémon: *Tiny*.
- Height: 1' 0".
- Weight: 4 lbs.



Figure 16: *Pidgey* (Pokémon number 16).





## 17 #17: Pidgeotto

Very protective of its sprawling territorial area, this Pokémon will fiercely peck at any intruder.

- Pokémon: *Bird*.
- Height: 3' 7".
- Weight: 66 lbs.



Figure 17: *Pidgeotto* (Pokémon number 17).



## 18 #18 : Pidgeot

When hunting, it skims the surface of water at high speed to pick off unwary prey such as Magikarp.

- Pokémon: *Bird*.
- Height: 4' 11".
- Weight: 87 lbs.



Figure 18: *Pidgeot* (Pokémon number 18).



## 19 #19 : Rattata

Bites anything when it attacks. Small and very quick, it is a common sight in many places.

- Pokémon: *Rat*.
- Height: 1' 0".
- Weight: 8 lbs.



Figure 19: *Rattata* (Pokémon number 19).



## 20 #20 : Raticate

It uses its whiskers to maintain its balance. It apparently slows down if they are cut off.

- Pokémon: *Rat*.
- Height: 2' 4".
- Weight: 41 lbs.



Figure 20: *Raticate* (Pokémon number 20).



## 21 #21 : Spearow

Eats bugs in grassy areas. It has to flap its short wings at high speed to stay airborne.

- Pokémon: *Tiny*.
- Height: *1' 0"*.
- Weight: *4 lbs*.



Figure 21: *Spearow* (Pokémon number 21).



## 22 #22 : Fearow

With its huge and magnificent wings, it can keep aloft without ever having to land for rest.

- Pokémon: *Beak*.
- Height: 3' 11".
- Weight: 84 lbs.



Figure 22: *Fearow* (Pokémon number 22).



## 23 #23 : Ekans

Moves silently and stealthily. Eats the eggs of birds, such as Pidgey and Spearow, whole.

- Pokémon: *Snake*.
- Height: 6' 7".
- Weight: 15 lbs.



Figure 23: *Ekans* (Pokémon number 23).



## 24 #24 : Arbok

It is rumored that the ferocious warning markings on its belly differ from area to area.

- Pokémon: *Cobra*.
- Height: 11' 6".
- Weight: 143 lbs.



Figure 24: *Arbok* (Pokémon number 24).





## 25 #25 : Pikachu

When several of these Pokémon gather, their electricity could build and cause lightning storms.

- Pokémon: *Mouse*.
- Height: *1' 4"*.
- Weight: *13 lbs*.

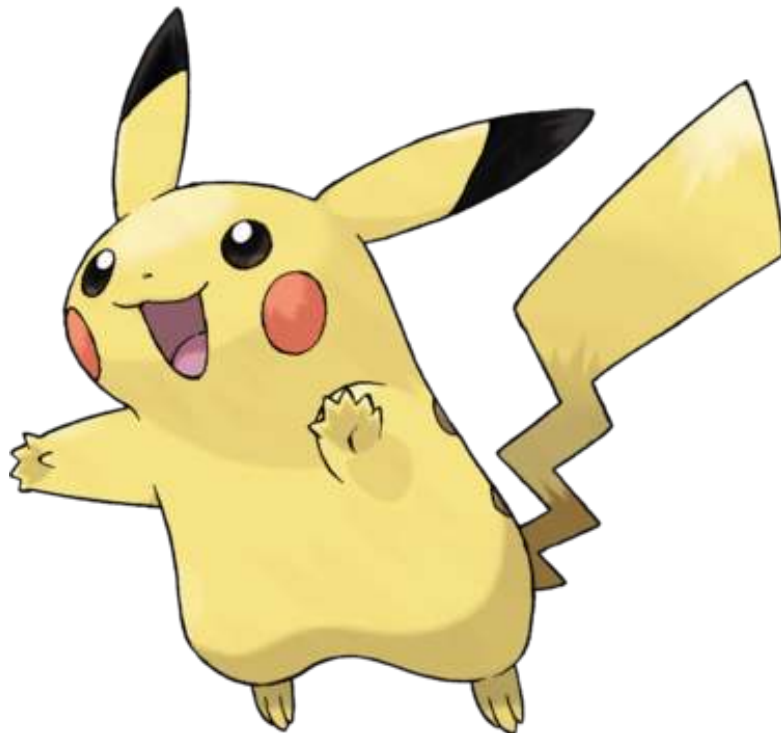


Figure 25: *Pikachu* (Pokémon number 25).



## 26 #26 : Raichu

Its long tail serves as a ground to protect itself from its own high voltage power.

- Pokémon: *Mouse*.
- Height: 2' 7".
- Weight: 66 lbs.



Figure 26: *Raichu* (Pokémon number 26).



## 27 #27 : Sandshrew

Burrows deep underground in arid locations far from water. It only emerges to hunt for food.

- Pokémon: *Mouse*.
- Height: 2' 0".
- Weight: 26 lbs.



Figure 27: *Sandshrew* (Pokémon number 27).



## 28 #28 : Sandslash

Curls up into a spiny ball when threatened. It can roll while curled up to attack or escape.

- Pokémon: *Mouse*.
- Height: 3' 3".
- Weight: 65 lbs.



Figure 28: *Sandslash* (Pokémon number 28).



## 29 #29 : Nidoran

Although small, its venomous barbs render this Pokémon dangerous. The female has smaller horns.

- Pokémon: *Poison*.
- Height: 1' 4".
- Weight: 15 lbs.



Figure 29: *Nidoran* (Pokémon number 29).



## 30 #30 : Nidorina

The female's horn develops slowly. Prefers physical attacks such as clawing and biting.

- Pokémon: *Poison*.
- Height: 2' 7".
- Weight: 44 lbs.



Figure 30: *Nidorina* (Pokémon number 30).



## 31 #31 : Nidoqueen

Its hard scales provide strong protection. It uses its hefty bulk to execute powerful moves.

- Pokémon: *Drill*.
- Height: 4' 3".
- Weight: 132 lbs.



Figure 31: *Nidoqueen* (Pokémon number 31).



## 32 #32 : Nidoran

Stiffens its ears to sense danger. The larger its horns, the more powerful its secreted venom.

- Pokémon: *Poison*.
- Height: 1' 8".
- Weight: 20 lbs.



Figure 32: *Nidoran* (Pokémon number 32).





### 33 #33 : Nidorino

An aggressive Pokémon that is quick to attack. The horn on its head secretes a powerful venom.

- Pokémon: *Poison*.
- Height: 2' 11".
- Weight: 43 lbs.



Figure 33: *Nidorino* (Pokémon number 33).



## 34 #34 : Nidoking

It uses its powerful tail in battle to smash, constrict, then break the prey's bones.

- Pokémon: *Drill*.
- Height: 4' 7".
- Weight: 137 lbs.



Figure 34: *Nidoking* (Pokémon number 34).



## 35 #35 : Clefairy

Its magical and cute appearance has many admirers. It is rare and found only in certain areas.

- Pokémon: *Fairy*.
- Height: 2' 0".
- Weight: 17 lbs.



Figure 35: *Clefairy* (Pokémon number 35).



## 36 #36 : Clefable

A timid fairy Pokémon that is rarely seen. It will run and hide the moment it senses people.

- Pokémon: *Fairy*.
- Height: 4' 3".
- Weight: 88 lbs.



Figure 36: *Clefable* (Pokémon number 36).



## 37 #37 : Vulpix

At the time of its birth, it has just one tail. The tail splits from its tip as it grows older.

- Pokémon: *Fox*.
- Height: 2' 0".
- Weight: 22 lbs.



Figure 37: *Vulpix* (Pokémon number 37).



## 38 #38 : Ninetales

Very smart and very vengeful. Grabbing one of its many tails could result in a 1000-year curse.

- Pokémon: *Fox*.
- Height: 3' 7".
- Weight: 44 lbs.



Figure 38: *Ninetales* (Pokémon number 38).



## 39 #39 : Jigglypuff

When its huge eyes light up, it sings a mysteriously soothing melody that lulls its enemies to sleep.

- Pokémon: *Balloon*.
- Height: *1' 8"*.
- Weight: *12 lbs.*



Figure 39: *Jigglypuff* (Pokémon number 39).



## 40 #40 : Wigglytuff

The body is soft and rubbery. When angered, it will suck in air and inflate itself to an enormous size.

- Pokémon: *Balloon*.
- Height: 3' 3".
- Weight: 26 lbs.



Figure 40: *Wigglytuff* (Pokémon number 40).





## 41 #41 : Zubat

Forms colonies in perpetually dark places. Uses ultrasonic waves to identify and approach targets.

- Pokémon: *Bat*.
- Height: 2' 7".
- Weight: 17 lbs.



Figure 41: *Zubat* (Pokémon number 41).



## 42 #42 : Golbat

Once it strikes, it will not stop draining energy from the victim even if it gets too heavy to fly.

- Pokémon: *Bat*.
- Height: 5' 3".
- Weight: 121 lbs.



Figure 42: *Golbat* (Pokémon number 42).



## 43 #43 : Oddish

During the day, it keeps its faced buried in the ground.  
At night, it wanders around sowing its seeds.

- Pokémon: *Weed*.
- Height: 1' 8".
- Weight: 12 lbs.



Figure 43: *Oddish* (Pokémon number 43).



## 44 #44 : Gloom

The fluid that oozes from its mouth isn't drool. It is a nectar that is used to attract prey.

- Pokémon: *Weed*.
- Height: 2' 7".
- Weight: 19 lbs.



Figure 44: *Gloom* (Pokémon number 44).



## 45 #45 : Vileplume

The larger its petals, the more toxic pollen it contains. Its big head is heavy and hard to hold up.

- Pokémon: *Flower*.
- Height: 3' 11".
- Weight: 41 lbs.



Figure 45: *Vileplume* (Pokémon number 45).



## 46 #46 : Paras

Burrows to suck tree roots. The mushrooms on its back grow by drawing nutrients from the bug host.

- Pokémon: *Mushroom*.
- Height: 1' 0".
- Weight: 12 lbs.



Figure 46: *Paras* (Pokémon number 46).



## 47 #47 : Parasect

A host-parasite pair in which the parasite mushroom has taken over the host bug. Prefers damp places.

- Pokémon: *Mushroom*.
- Height: 3' 3".
- Weight: 65 lbs.



Figure 47: *Parasect* (Pokémon number 47).



## 48 #48 : Venonat

Lives in the shadows of tall trees where it eats insects. It is attracted by light at night.

- Pokémon: *Insect*.
- Height: 3' 3".
- Weight: 66 lbs.



Figure 48: *Venonat* (Pokémon number 48).





## 49 #49 : Venomoth

The dust-like scales covering its wings are color coded to indicate the kind of poison it has.

- Pokémon: *Poison*.
- Height: 4' 11".
- Weight: 28 lbs.

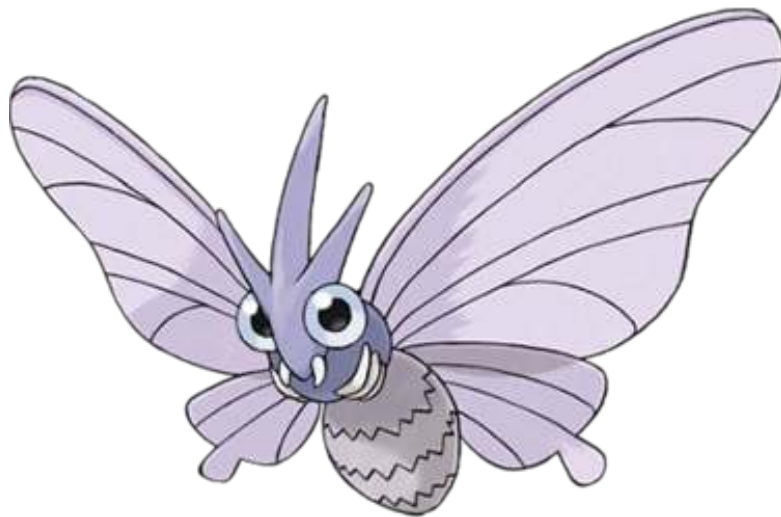


Figure 49: *Venomoth* (Pokémon number 49).



## 50 #50 : Diglett

Lives about one yard underground where it feeds on plant roots. It sometimes appears above ground.

- Pokémon: *Mole*.
- Height: 0' 8".
- Weight: 2 lbs.



Figure 50: *Diglett* (Pokémon number 50).



## 51 #51 : Dugtrio

A team of Diglett triplets. It triggers huge earthquakes by burrowing 60 miles underground.

- Pokémon: *Mole*.
- Height: 2' 4".
- Weight: 73 lbs.

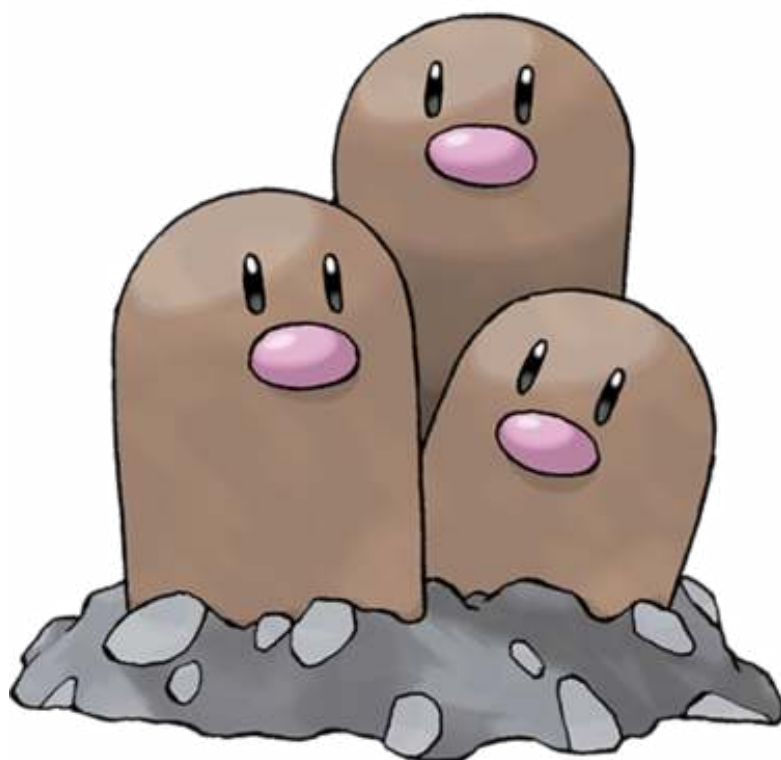


Figure 51: *Dugtrio* (Pokémon number 51).



## 52 #52 : Meowth

Adores circular objects. Wanders the streets on a nightly basis to look for dropped loose change.

- Pokémon: *Scratch*.
- Height: 1' 4".
- Weight: 9 lbs.



Figure 52: *Meowth* (Pokémon number 52).



## 53 #53 : Persian

Although its fur has many admirers, it is tough to raise as a pet because of its fickle meanness.

- Pokémon: *Classy*.
- Height: 3' 3".
- Weight: 71 lbs.



Figure 53: *Persian* (Pokémon number 53).



## 54 #54 : Psyduck

While lulling its enemies with its vacant look, this wily Pokémon use psychokinetic powers.

- Pokémon: *Duck*.
- Height: 2' 7".
- Weight: 43 lbs.



Figure 54: *Psyduck* (Pokémon number 54).



## 55 #55 : Golduck

Often seen swimming elegantly by lake shores. It is often mistaken for the Japanese monster, Kappa.

- Pokémon: *Duck*.
- Height: 5' 7".
- Weight: 169 lbs.



Figure 55: *Golduck* (Pokémon number 55).



## 56 #56 : Mankey

Extremely quick to anger. It could docile one moment then thrashing away the next instant.

- Pokémon: *Pig.*
- Height: *1' 8"*.
- Weight: *62 lbs.*



Figure 56: *Mankey* (Pokémon number 56).





## 57 #57 : Primeape

Always furious and tenacious to boot. It will not abandon chasing its quarry until it is caught.

- Pokémon: *Pig.*
- Height: 3' 3".
- Weight: 71 lbs.



Figure 57: *Primeape* (Pokémon number 57).



## 58 #58 : Growlithe

Very protective of its territory. It will bark and bite to repel intruders from its space.

- Pokémon: *Puppy*.
- Height: 2' 4".
- Weight: 42 lbs.



Figure 58: *Growlithe* (Pokémon number 58).



## 59 #59 : Arcanine

A Pokémon that has been admired since the past for its beauty. It runs agilely as if on wings.

- Pokémon: *Legendary*.
- Height: 6' 3".
- Weight: 342 lbs.



Figure 59: *Arcanine* (Pokémon number 59).



## 60 #60 : Poliwag

Its newly grown legs prevent it from running. It appears to prefer swimming than trying to stand.

- Pokémon: *Tadpole*.
- Height: 2' 0".
- Weight: 27 lbs.



Figure 60: *Poliwag* (Pokémon number 60).



## 61 #61 : Poliwhirl

Capable of living in or out of water. When out of water, it sweats to keep its body slimy.

- Pokémon: *Tadpole*.
- Height: 3' 3".
- Weight: 44 lbs.



Figure 61: *Poliwhirl* (Pokémon number 61).



## 62 #62 : Poliwrath

An adept swimmer at both the front crawl and breast stroke. Easily overtakes even the best human swimmers.

- Pokémon: *Tadpole*.
- Height: 4' 3".
- Weight: 119 lbs.



Figure 62: *Poliwrath* (Pokémon number 62).



## 63 #63 : Abra

Using its ability to read minds, it will identify impending danger and teleport to safety.

- Pokémon: *Psi*.
- Height: 2' 11".
- Weight: 43 lbs.



Figure 63: *Abra* (Pokémon number 63).



## 64 #64 : Kadabra

It emits special alpha waves from its body that induce headaches just by being close by.

- Pokémon: *Psi*.
- Height: 4' 3".
- Weight: 125 lbs.



Figure 64: *Kadabra* (Pokémon number 64).





## 65 #65 : Alakazam

Its brain can outperform a super computer. Its intelligence quotient is said to be 5000.

- Pokémon: *Psi*.
- Height: 4' 11".
- Weight: 106 lbs.



Figure 65: *Alakazam* (Pokémon number 65).



## 66 #66 : Machop

Loves to build its muscles. It trains in all styles of martial arts to become even stronger.

- Pokémon: *Superpower*.
- Height: 2' 7".
- Weight: 43 lbs.



Figure 66: *Machop* (Pokémon number 66).



## 67 #67 : Machoke

Its muscular body is so powerful, it must wear a power save belt to be able to regulate its motions.

- Pokémon: *Superpower*.
- Height: 4' 11".
- Weight: 155 lbs.



Figure 67: *Machoke* (Pokémon number 67).



## 68 #68 : Machamp

Using its heavy muscles, it throws powerful punches that can send the victim clear over the horizon.

- Pokémon: *Superpower*.
- Height: 5' 3".
- Weight: 287 lbs.



Figure 68: *Machamp* (Pokémon number 68).



## 69 #69 : Bellsprout

A carnivorous Pokémon that traps and eats bugs. It uses its root feet to soak up needed moisture.

- Pokémon: *Flower*.
- Height: 2' 4".
- Weight: 9 lbs.

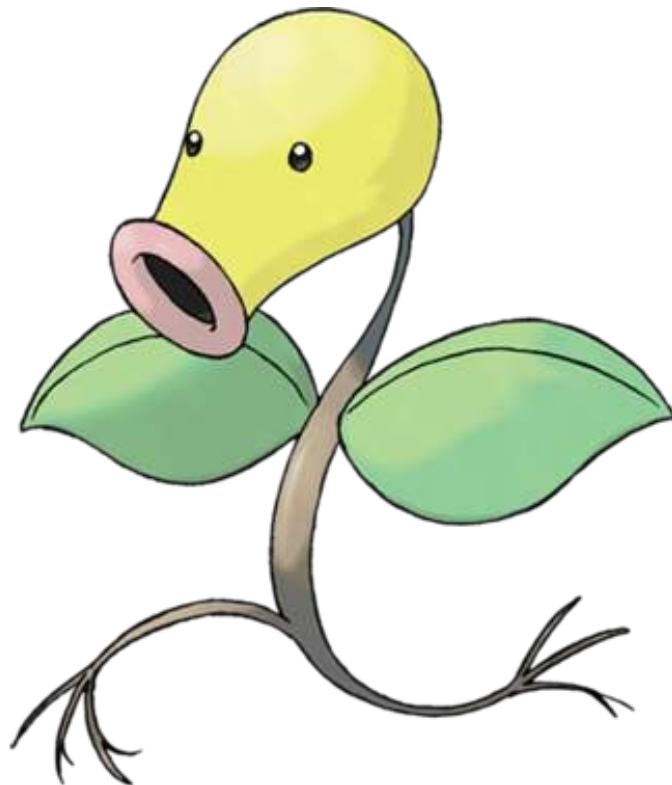


Figure 69: *Bellsprout* (Pokémon number 69).



## 70 #70 : Weepinbell

It spits out poison powder to immobilize the enemy and then finishes it with a spray of acid.

- Pokémon: *Flycatcher*.
- Height: 3' 3".
- Weight: 14 lbs.



Figure 70: *Weepinbell* (Pokémon number 70).



## 71 #71 : Victreebel

Said to live in huge colonies deep in jungles, although no one has ever returned from there.

- Pokémon: *Flycatcher*.
- Height: 5' 7".
- Weight: 34 lbs.



Figure 71: *Victreebel* (Pokémon number 71).



## 72 #72 : Tentacool

Drifts in shallow seas. Anglers who hook them by accident are often punished by its stinging acid.

- Pokémon: *Jellyfish*.
- Height: 2' 11".
- Weight: 100 lbs.



Figure 72: *Tentacool* (Pokémon number 72).





## 73 #73 : Tentacruel

The tentacles are normally kept short. On hunts, they are extended to ensnare and immobilize prey.

- Pokémon: *Jellyfish*.
- Height: 5' 3".
- Weight: 121 lbs.



Figure 73: *Tentacruel* (Pokémon number 73).



## 74 #74 : Geodude

Found in fields and mountains. Mistaking them for boulders, people often step or trip on them.

- Pokémon: *Rock*.
- Height: *1' 4"*.
- Weight: *44 lbs*.



Figure 74: *Geodude* (Pokémon number 74).



## 75 #75 : Graveler

Rolls down slopes to move. It rolls over any obstacles without slowing or changing its direction.

- Pokémon: *Rock*.
- Height: 3' 3".
- Weight: 232 *lbs*.



Figure 75: *Graveler* (Pokémon number 75).



## 76 #76 : Golem

Its boulder-like body is extremely hard. It can easily withstand dynamite blasts without damage.

- Pokémon: *Megaton*.
- Height: 4' 7".
- Weight: 662 lbs.



Figure 76: *Golem* (Pokémon number 76).



## 77 #77 : Ponyta

Its hooves are 10 times harder than diamonds. It can trample anything completely flat in little time.

- Pokémon: *Fire*.
- Height: 3' 3".
- Weight: 66 lbs.



Figure 77: *Ponyta* (Pokémon number 77).



## 78 #78 : Rapidash

Very competitive, this Pokémon will chase anything that moves fast in the hopes of racing it.

- Pokémon: *Fire*.
- Height: 5' 7".
- Weight: 209 *lbs*.



Figure 78: *Rapidash* (Pokémon number 78).



## 79 #79 : Slowpoke

Incredibly slow and dopey. It takes 5 seconds for it to feel pain when under attack.

- Pokémon: *Dopey*.
- Height: 3' 11".
- Weight: 79 lbs.



Figure 79: *Slowpoke* (Pokémon number 79).



## 80 #80 : Slowbro

The Shellder that is latched onto Slowpoke's tail is said to feed on the host's left over scraps.

- Pokémon: *Hermit*.
- Height: 5' 3".
- Weight: 173 lbs.



Figure 80: *Slowbro* (Pokémon number 80).





## 81 #81 : Magnemite

Uses anti-gravity to stay suspended. Appears without warning and uses Thunder Wave and similar moves.

- Pokémon: *Magnet*.
- Height: 1' 0".
- Weight: 13 lbs.

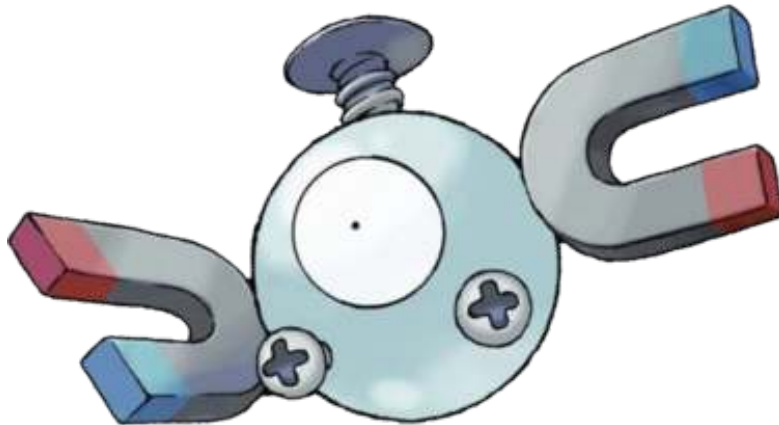


Figure 81: *Magnemite* (Pokémon number 81).



## 82 #82 : Magneton

Formed by several Magnemites linked together. They frequently appear when sunspots flare up.

- Pokémon: *Magnet*.
- Height: 3' 3".
- Weight: 132 lbs.

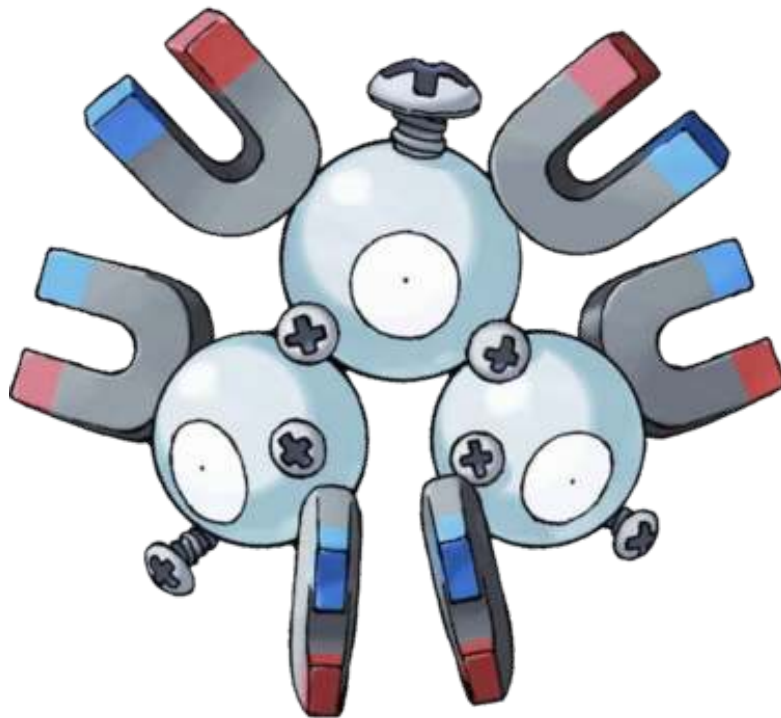


Figure 82: *Magneton* (Pokémon number 82).



## 83 #83 : Farfetch'd

The sprig of green onions it holds is its weapon. It is used much like a metal sword.

- Pokémon: *Wild*.
- Height: 2' 7".
- Weight: 33 lbs.



Figure 83: *Farfetch'd* (Pokémon number 83).



## 84 #84 : Doduo

A bird that makes up for its poor flying with its fast foot speed. Leaves giant footprints.

- Pokémon: *Twin*.
- Height: 4' 7".
- Weight: 86 lbs.

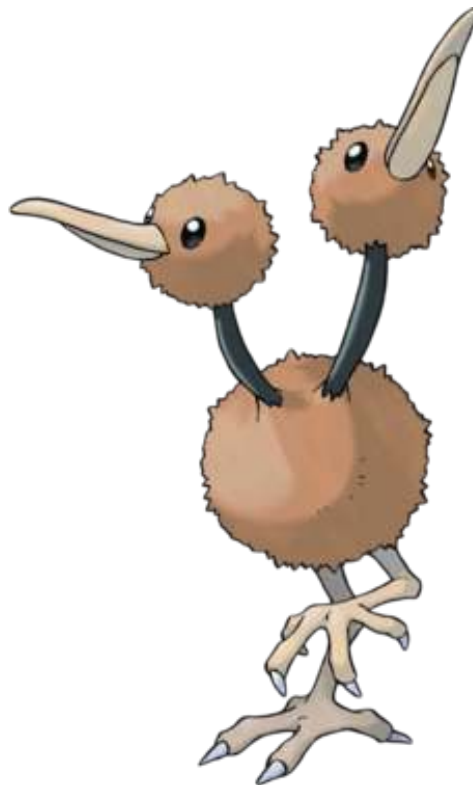


Figure 84: *Doduo* (Pokémon number 84).



## 85 #85 : Dodrio

Uses its three brains to execute complex plans. While two heads sleep, one head stays awake.

- Pokémon: *Triple*.
- Height: 5' 11".
- Weight: 188 lbs.



Figure 85: *Dodrio* (Pokémon number 85).



## 86 #86 : Seel

The horn protruding on its head is very hard. It is used for bashing through thick ice.

- Pokémon: *Sea*.
- Height: 3' 7".
- Weight: 198 lbs.



Figure 86: *Seel* (Pokémon number 86).



## 87 #87 : Dewgong

Stores thermal energy in its body. Swims at a steady 8 knots, even in intensely cold waters.

- Pokémon: *Sea*.
- Height: 5' 7".
- Weight: 265 lbs.



Figure 87: *Dewgong* (Pokémon number 87).



## 88 #88 : Grimer

Appears in filthy areas. Thrives by sucking up polluted sludge that is pumped out of factories.

- Pokémon: *Sludge*.
- Height: 2' 11".
- Weight: 66 lbs.



Figure 88: *Grimer* (Pokémon number 88).





## 89 #89 : Muk

Thickly covered with a filthy, vile sludge. It is so toxic, even its footprints contain poison.

- Pokémon: *Sludge*.
- Height: 3' 11".
- Weight: 66 lbs.



Figure 89: *Muk* (Pokémon number 89).



## 90 #90 : Shellder

Its hard shell repels any kind of attack. It is vulnerable only when its shell is open.

- Pokémon: *Bivalve*.
- Height: 1' 00".
- Weight: 9 lbs.



Figure 90: *Shellder* (Pokémon number 90).



## 91 #91 : Cloyster

When attacked, it launches its horns in quick volleys.  
Its innards have never been seen.

- Pokémon: *Bivalve*.
- Height: 4' 11".
- Weight: 292 lbs.



Figure 91: *Cloyster* (Pokémon number 91).



## 92 #92 : Gastly

Almost invisible, this gaseous Pokémon cloaks the target and puts it to sleep without notice.

- Pokémon: *Gas*.
- Height: 4' 3".
- Weight: 2 lbs.



Figure 92: *Gastly* (Pokémon number 92).



## 93 #93 : Haunter

Because of its ability to slip through block walls, it is said to be from another dimension.

- Pokémon: *Gas*.
- Height: 5' 3".
- Weight: 2 *lbs*.



Figure 93: *Haunter* (Pokémon number 93).



## 94 #94 : Gengar

Under a full moon, this Pokémon likes to mimic the shadows of people and laugh at their fright.

- Pokémon: *Shadow*.
- Height: 4' 11".
- Weight: 89 lbs.



Figure 94: *Gengar* (Pokémon number 94).



## 95 #95 : Onix

As it grows, the stone portions of its body harden to become similar to a diamond, but colored black.

- Pokémon: *Rock*.
- Height: 28' 10".
- Weight: 463 lbs.



Figure 95: *Onix* (Pokémon number 95).



## 96 #96 : Drowzee

Puts enemies to sleep then eats their dreams. Occasionally gets sick from eating bad dreams.

- Pokémon: *Hypnosis*.
- Height: 3' 3".
- Weight: 71 lbs.



Figure 96: *Drowzee* (Pokémon number 96).





## 97 #97 : Hypno

When it locks eyes with an enemy, it will use a mix of Psi moves such as Hypnosis and Confusion.

- Pokémon: *Hypnosis*.
- Height: 5' 3".
- Weight: 167 lbs.



Figure 97: *Hypno* (Pokémon number 97).



## 98 #98 : Krabby

Its pincers are not only powerful weapons, they are used for balance when walking sideways.

- Pokémon: *River*.
- Height: 1' 4".
- Weight: 14 lbs.



Figure 98: *Krabby* (Pokémon number 98).



## 99 #99 : Kingler

The large pincer has 10000 HP of crushing power. However, its huge size makes it unwieldy to use.

- Pokémon: *Pincer*.
- Height: 4' 3".
- Weight: 132 lbs.



Figure 99: *Kingler* (Pokémon number 99).



## 100 #100 : Voltorb

Usually found in power plants. Easily mistaken for a Pokéball, they have zapped many people.

- Pokémon: *Ball*.
- Height: 1' 8".
- Weight: 23 lbs.

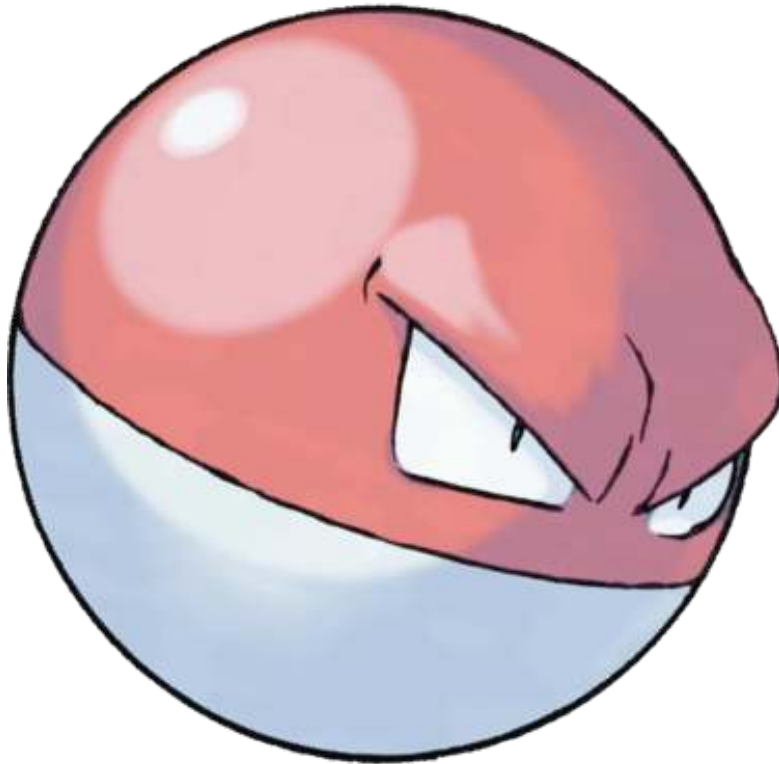


Figure 100: *Voltorb* (Pokémon number 100).



## 101 #101 : Electrode

It stores electric energy under very high pressure. It often explodes under little or no provocation.

- Pokémon: *Ball*.
- Height: 3' 11".
- Weight: 147 lbs.



Figure 101: *Electrode* (Pokémon number 101).



## 102 #102 : Exeggcute

Often mistaken for eggs. When disturbed, they quickly gather and attack in swarms.

- Pokémon: *Egg*.
- Height: 1' 4".
- Weight: 6 lbs.

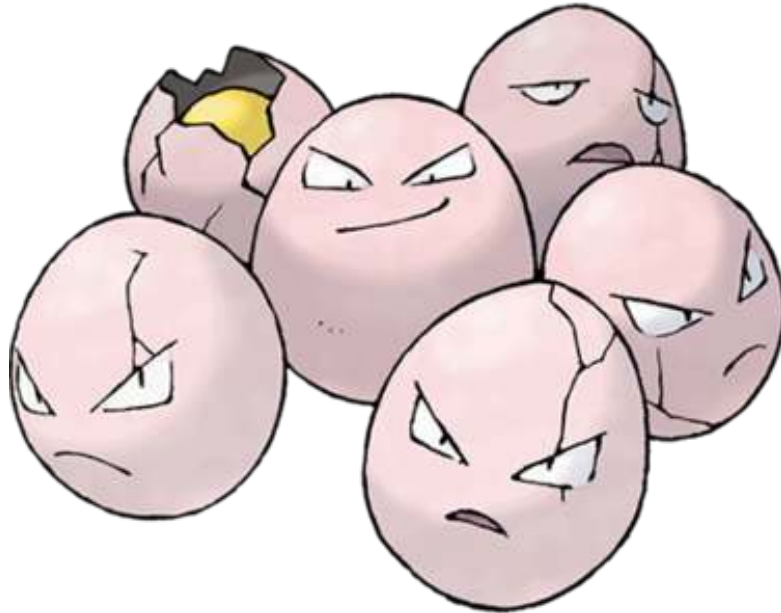


Figure 102: *Exeggcute* (Pokémon number 102).



## 103 #103 : Exeggutor

Legend has it that on rare occasions, one of its heads will drop off and continue on as an Exeggcute.

- Pokémon: *Coconut*.
- Height: 6' 7".
- Weight: 265 lbs.



Figure 103: *Exeggutor* (Pokémon number 103).



## 104 #104 : Cubone

Because it never removes its skull helmet, no one has ever seen this Pokémon's real face.

- Pokémon: *Lonely*.
- Height: 1' 4".
- Weight: 14 lbs.



Figure 104: *Cubone* (Pokémon number 104).





## 105 #105 : Marowak

The bone it holds is its key weapon. It throws the bone skillfully like a boomerang to KO targets.

- Pokémon: *Bonekeeper*.
- Height: 3' 3".
- Weight: 99 lbs.



Figure 105: *Marowak* (Pokémon number 105).



## 106 #106 : Hitmonlee

When in a hurry, its legs lengthen progressively. It runs smoothly with extra long, loping strides.

- Pokémon: *Kicking*.
- Height: 4' 11".
- Weight: 110 lbs.

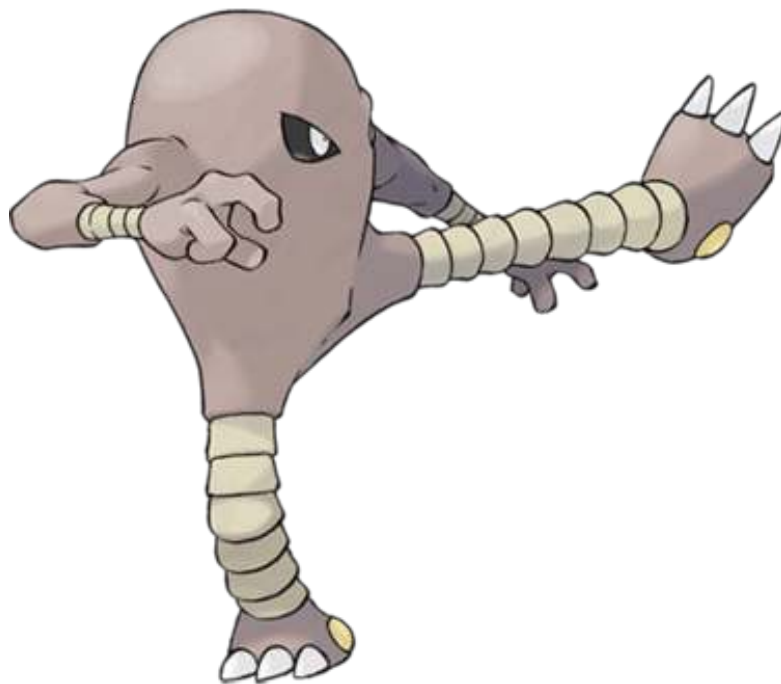


Figure 106: *Hitmonlee* (Pokémon number 106).



## 107 #107 : Hitmonchan

While apparently doing nothing, it fires punches in lightning fast volleys that are impossible to see.

- Pokémon: *Punching*.
- Height: 4' 7".
- Weight: 111 lbs.



Figure 107: *Hitmonchan* (Pokémon number 107).



## 108 #108 : Lickitung

Its tongue can be extended like a chameleon's. It leaves a tingling sensation when it licks enemies.

- Pokémon: *Licking*.
- Height: 3' 11".
- Weight: 144 lbs.



Figure 108: *Lickitung* (Pokémon number 108).



## 109 #109 : Koffing

Because it stores several kinds of toxic gases in its body, it is prone to exploding without warning.

- Pokémon: *Poison*.
- Height: 2' 0".
- Weight: 2 lbs.

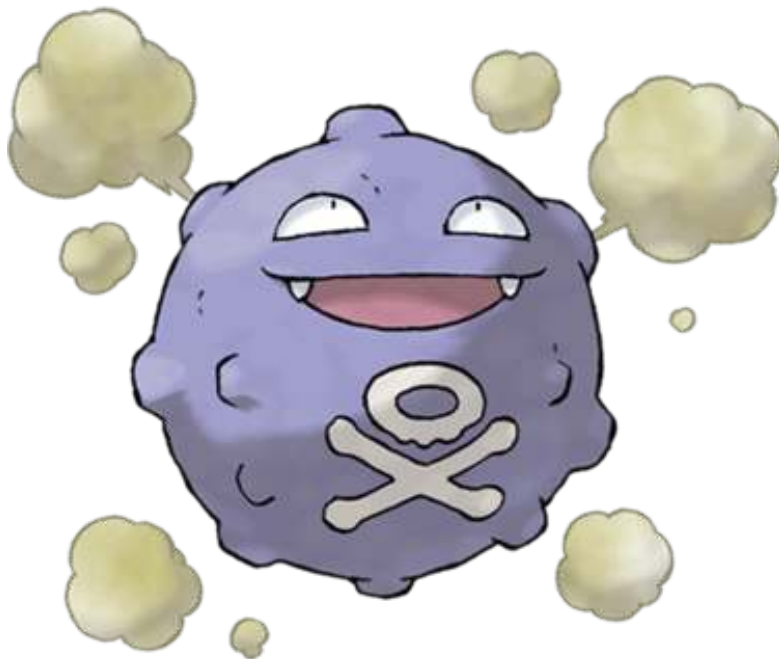


Figure 109: *Koffing* (Pokémon number 109).



## 110 #110: Weezing

Where 2 kinds of poison gases meet, 2 Koffings can fuse into a Weezing over many years.

- Pokémon: *Poison*.
- Height: 3' 11".
- Weight: 21 lbs.

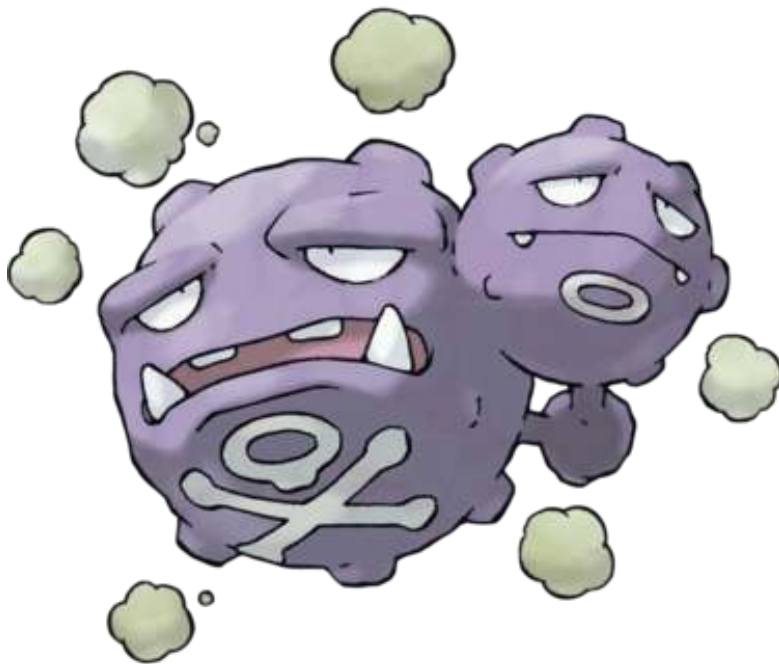


Figure 110: *Weezing* (Pokémon number 110).



## 111 #111 : Rhyhorn

Its massive bones are 1000 times harder than human bones. It can easily knock a trailer flying.

- Pokémon: *Spikes*.
- Height: 3' 3".
- Weight: 254 *lbs*.



Figure 111: *Rhyhorn* (Pokémon number 111).



## 112 #112 : Rhydon

Protected by an armor-like hide, it is capable of living in molten lava of 3600 degrees.

- Pokémon: *Drill*.
- Height: 6' 3".
- Weight: 265 lbs.



Figure 112: *Rhydon* (Pokémon number 112).





## 113 #113 : Chansey

A rare and elusive Pokémon that is said to bring happiness to those who manage to get it.

- Pokémon: *Egg*.
- Height: 3' 7".
- Weight: 76 *lbs*.



Figure 113: *Chansey* (Pokémon number 113).



## 114 #114 : Tangela

The whole body is swathed with wide vines that are similar to seaweed. Its vines shake as it walks.

- Pokémon: *Vine*.
- Height: 3' 3".
- Weight: 77 lbs.

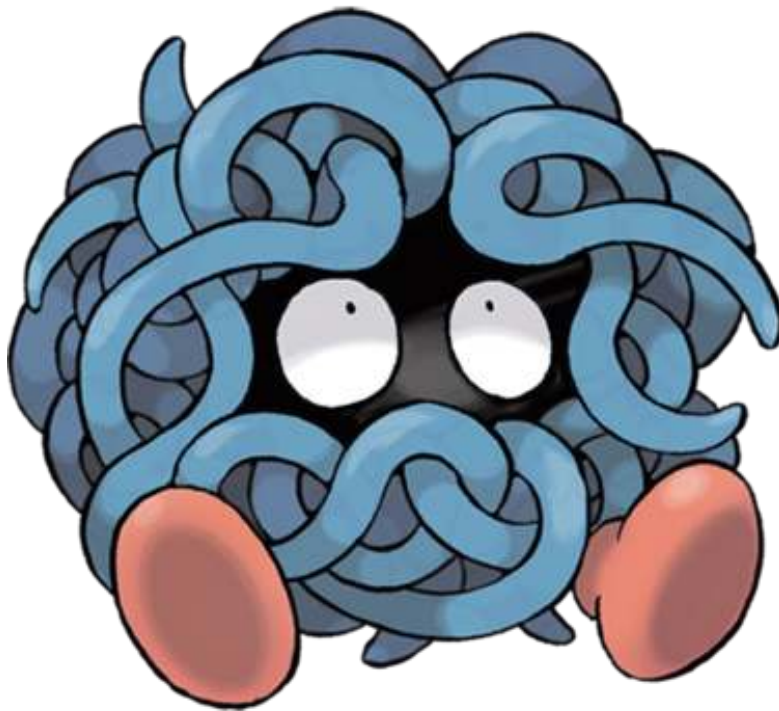


Figure 114: *Tangela* (Pokémon number 114).



## 115 #115 : Kangaskhan

The infant rarely ventures out of its mother's protective pouch until it is 3 years old.

- Pokémon: *Parent*.
- Height: 7' 3".
- Weight: 176 lbs.



Figure 115: *Kangaskhan* (Pokémon number 115).



## 116 #116 : Horsea

Known to shoot down flying bugs with precision blasts of ink from the surface of the water.

- Pokémon: *Dragon*.
- Height: 1' 4".
- Weight: 18 lbs.



Figure 116: *Horsea* (Pokémon number 116).



## 117 #117: Seadra

Capable of swimming backwards by rapidly flapping its wing-like pectoral fins and stout tail.

- Pokémon: *Dragon*.
- Height: 3' 11".
- Weight: 55 lbs.



Figure 117: *Seadra* (Pokémon number 117).



## 118 #118 : Goldeen

Its tailfin billows like an elegant ballroom dress, giving it the nickname of the Water Queen.

- Pokémon: *Goldfish*.
- Height: 2' 0".
- Weight: 33 lbs.



Figure 118: *Goldeen* (Pokémon number 118).



## 119 #119 : Seaking

In the autumn spawning season, they can be seen swimming powerfully up rivers and creeks.

- Pokémon: *Goldfish*.
- Height: 4' 3".
- Weight: 86 lbs.



Figure 119: *Seaking* (Pokémon number 119).



## 120 #120 : Staryu

An enigmatic Pokémon that can effortlessly regenerate any appendage it loses in battle.

- Pokémon: *Starshape*.
- Height: 2' 7".
- Weight: 76 lbs.



Figure 120: *Staryu* (Pokémon number 120).





## 121 #121 : Starmie

Its central core glows with the seven colors of the rainbow. Some people value the core as a gem.

- Pokémon: *Mysterious*.
- Height: 3' 7".
- Weight: 176 lbs.



Figure 121: *Starmie* (Pokémon number 121).



## 122 #122 : Mr.Mime

If interrupted while it is miming, it will slap around the offender with its broad hands.

- Pokémon: *Barrier*.
- Height: 4' 3".
- Weight: 120 lbs.



Figure 122: *Mr.Mime* (Pokémon number 122).



## 123 #123 : Scyther

With ninja-like agility and speed, it can create the illusion that there is more than one.

- Pokémon: *Mantis*.
- Height: 4' 11".
- Weight: 123 lbs.



Figure 123: *Scyther* (Pokémon number 123).



## 124 #124 : Jynx

It seductively wiggles its hips as it walks. It can cause people to dance in unison with it.

- Pokémon: *Human*.
- Height: 4' 7".
- Weight: 90 lbs.



Figure 124: *Jynx* (Pokémon number 124).



## 125 #125 : Electabuzz

Normally found near power plants, they can wander away and cause major blackouts in cities.

- Pokémon: *Electric*.
- Height: 3' 7".
- Weight: 66 lbs.



Figure 125: *Electabuzz* (Pokémon number 125).



## 126 #126 : Magmar

Its body always burns with an orange glow that enables it to hide perfectly among flames.

- Pokémon: *Spitfire*.
- Height: 4' 3".
- Weight: 98 lbs.



Figure 126: *Magmar* (Pokémon number 126).



## 127 #127 : Pinsir

If it fails to crush the victim in its pincers, it will swing it around and toss it hard.

- Pokémon: *Stag*.
- Height: 4' 11".
- Weight: 121 lbs.



Figure 127: *Pinsir* (Pokémon number 127).



## 128 #128 : Tauros

When it targets an enemy, it charges furiously while whipping its body with its long tails.

- Pokémon: *Wild*.
- Height: 4' 7".
- Weight: 195 lbs.



Figure 128: *Tauros* (Pokémon number 128).





## 129 #129 : Magikarp

In the distant past, it was somewhat stronger than the horribly weak descendants that exist today.

- Pokémon: *Fish*.
- Height: 2' 11".
- Weight: 22 *lbs*.

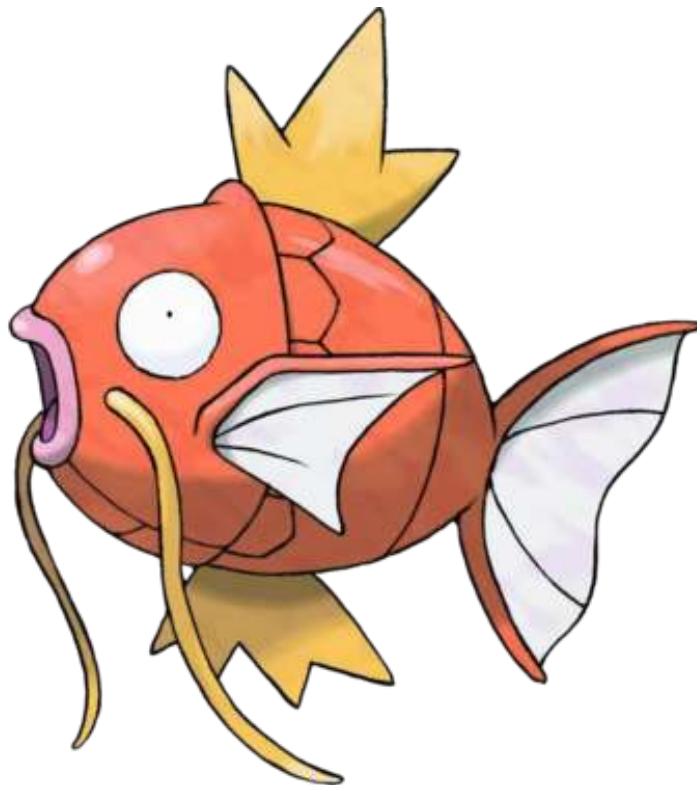


Figure 129: *Magikarp* (Pokémon number 129).



## 130 #130 : Gyarados

Rarely seen in the wild. Huge and vicious, it is capable of destroying entire cities in a rage.

- Pokémon: *Atrocious*.
- Height: 21' 4".
- Weight: 518 lbs.



Figure 130: *Gyarados* (Pokémon number 130).



## 131 #131 : Lapras

A Pokémon that has been overhunted almost to extinction. It can ferry people across the water.

- Pokémon: *Transport*.
- Height: 8' 2".
- Weight: 485 lbs.

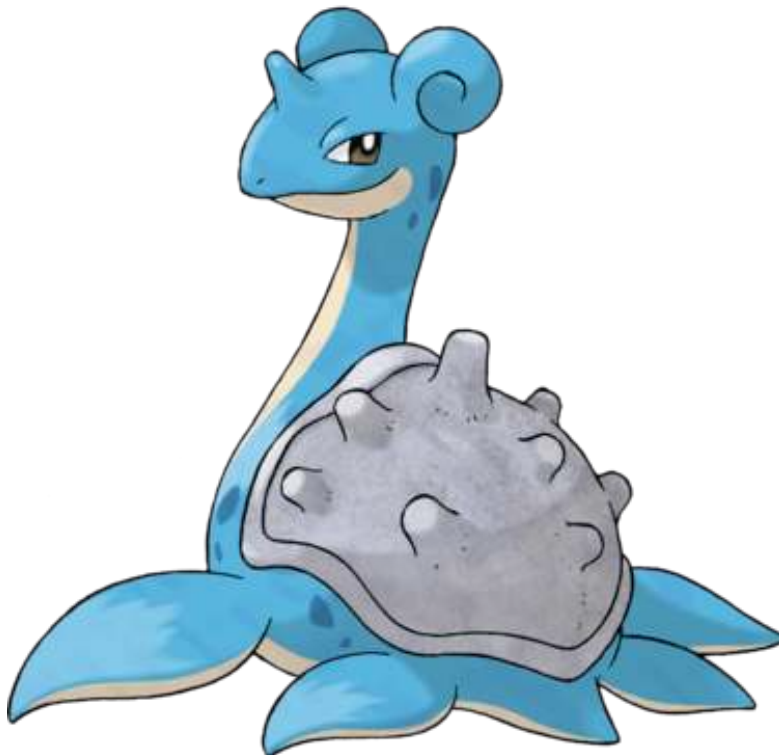


Figure 131: *Lapras* (Pokémon number 131).



## 132 #132 : Ditto

Capable of copying an enemy's genetic code to instantly transform itself into a duplicate of the enemy.

- Pokémon: *Transform*.
- Height: 1' 0".
- Weight: 9 lbs.

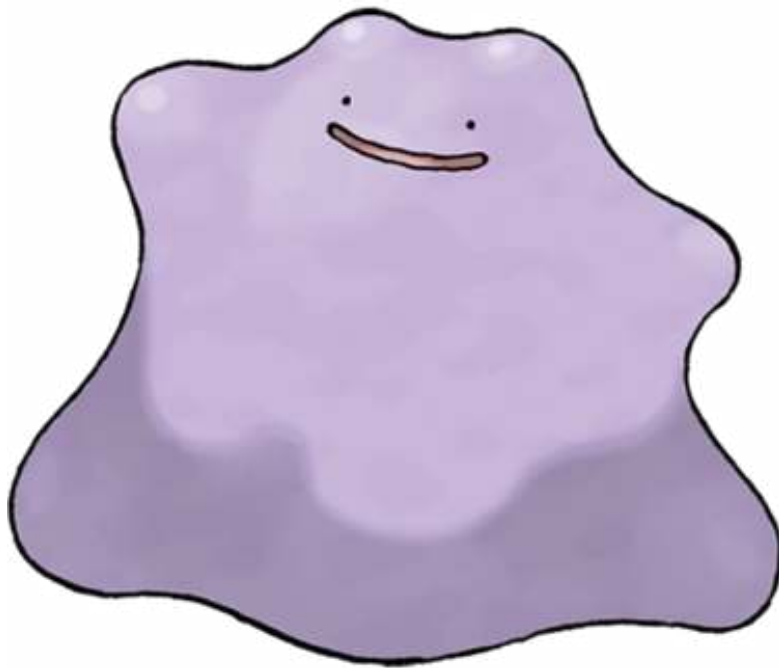


Figure 132: *Ditto* (Pokémon number 132).



## 133 #133 : Eevee

Its genetic code is irregular. It may mutate if it is exposed to radiation from element Stones.

- Pokémon: *Evolution*.
- Height: 1' 0".
- Weight: 14 lbs.



Figure 133: *Eevee* (Pokémon number 133).



## 134 #134 : Vaporeon

Lives close to water. Its long tail is ridged with a fin which is often mistaken for a mermaid's.

- Pokémon: *Bubble*.
- Height: 3' 3".
- Weight: 64 lbs.



Figure 134: *Vaporeon* (Pokémon number 134).



## 135 #135 : Jolteon

It accumulates negative ions in the atmosphere to blast out 10000-volt lightning bolts.

- Pokémon: *Lightning*.
- Height: 2' 7".
- Weight: 54 lbs.



Figure 135: *Jolteon* (Pokémon number 135).



## 136 #136 : Flareon

When storing thermal energy in its body, its temperature could soar to over 1600 degrees.

- Pokémon: *Flame*.
- Height: 2' 11".
- Weight: 55 lbs.



Figure 136: *Flareon* (Pokémon number 136).





## 137 #137 : Porygon

A Pokémon that consists entirely of programming code. Capable of moving freely in cyberspace.

- Pokémon: *Virtual*.
- Height: 2' 7".
- Weight: 80 lbs.

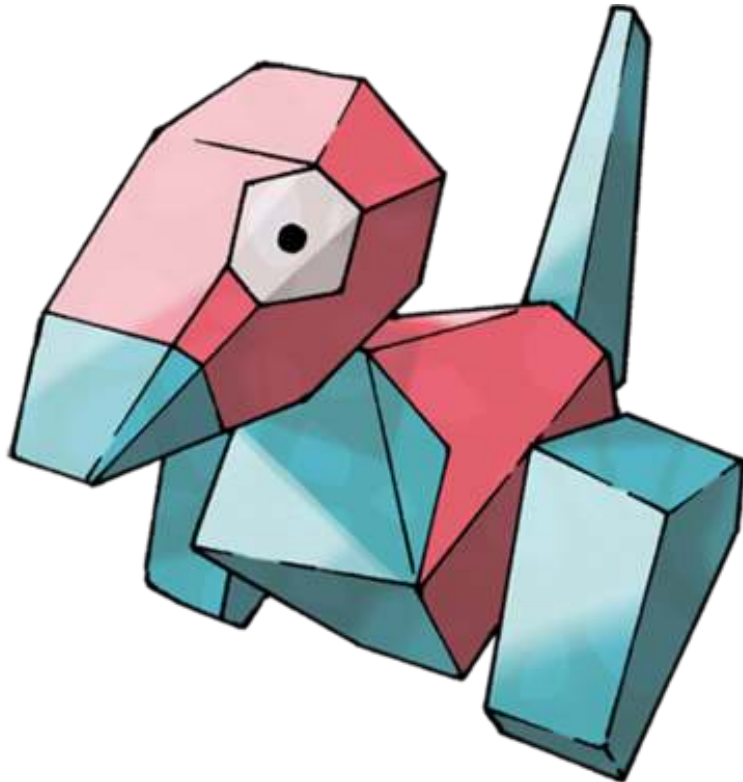


Figure 137: *Porygon* (Pokémon number 137).



## 138 #138 : Omanyte

Although long extinct, in rare cases, it can be genetically resurrected from fossils.

- Pokémon: *Spiral*.
- Height: 1' 4".
- Weight: 17 lbs.



Figure 138: *Omanyte* (Pokémon number 138).



## 139 #139 : Omastar

A prehistoric Pokémon that died out when its heavy shell made it impossible to catch prey.

- Pokémon: *Spiral*.
- Height: 3' 3".
- Weight: 77 lbs.



Figure 139: *Omastar* (Pokémon number 139).



## 140 #140 : Kabuto

A Pokémon that was resurrected from a fossil found in what was once the ocean floor eons ago.

- Pokémon: *Shellfish*.
- Height: 1' 8".
- Weight: 25 lbs.



Figure 140: *Kabuto* (Pokémon number 140).



## 141 #141 : Kabutops

Its sleek shape is perfect for swimming. It slashes prey with its claws and drains the body fluids.

- Pokémon: *Shellfish*.
- Height: 4' 3".
- Weight: 89 lbs.



Figure 141: *Kabutops* (Pokémon number 141).



## 142 #142 : Aerodactyl

A ferocious, prehistoric Pokémon that goes for the enemy's throat with its serrated saw-like fangs.

- Pokémon: *Fossil*.
- Height: 5' 11".
- Weight: 130 lbs.



Figure 142: *Aerodactyl* (Pokémon number 142).



## 143 #143 : Snorlax

Very lazy. Just eats and sleeps. As its rotund bulk builds, it becomes steadily more slothful.

- Pokémon: *Sleeping*.
- Height: 6' 11".
- Weight: 1014 lbs.



Figure 143: *Snorlax* (Pokémon number 143).



## 144 #144 : Articuno

A legendary bird Pokémon that is said to appear to doomed people who are lost in icy mountains.

- Pokémon: *Freeze*.
- Height: 5' 7".
- Weight: 122 *lbs*.



Figure 144: *Articuno* (Pokémon number 144).





## 145 #145 : Zapdos

A legendary bird Pokémon that is said to appear from clouds while dropping enormous lightning bolts.

- Pokémon: *Electric*.
- Height: 5' 3".
- Weight: 116 lbs.

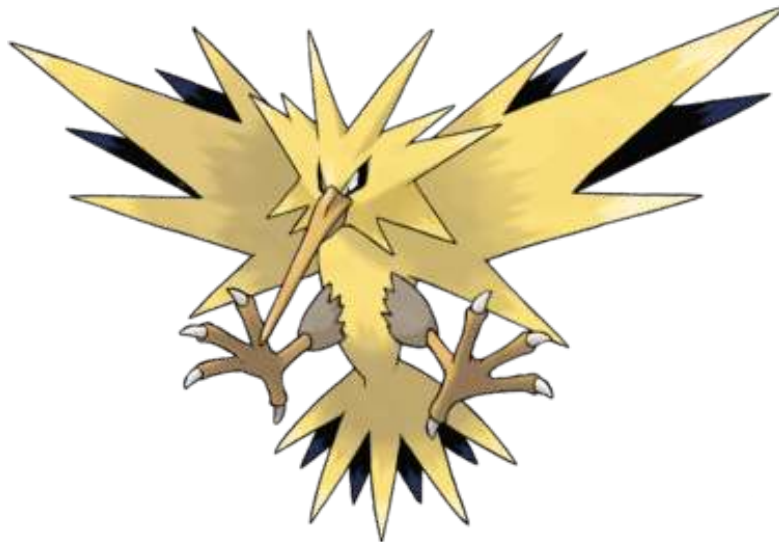


Figure 145: *Zapdos* (Pokémon number 145).



## 146 #146 : Moltres

Known as the legendary chicken of fire. Every flap of its wings creates a dazzling flash of flames.

- Pokémon: *Flame*.
- Height: 6' 7".
- Weight: 132 lbs.



Figure 146: *Moltres* (Pokémon number 146).



## 147 #147 : Dratini

Long considered a mythical Pokémon until recently when a small colony was found living underwater.

- Pokémon: *Dragon*.
- Height: 5' 11".
- Weight: 7 lbs.



Figure 147: *Dratini* (Pokémon number 147).



## 148 #148 : Dragonair

A mystical Pokémon that exudes a gentle aura. Has the ability to change climate conditions.

- Pokémon: *Dragon*.
- Height: 13' 1".
- Weight: 36 lbs.



Figure 148: *Dragonair* (Pokémon number 148).



## 149 #149 : Dragonite

An extremely rarely seen marine Pokémon. Its intelligence is said to match that of humans.

- Pokémon: *Dragon*.
- Height: 7' 3".
- Weight: 463 lbs.



Figure 149: *Dragonite* (Pokémon number 149).



## 150 #150 : Mewtwo

It was created by a scientist after years of horrific gene splicing and DNA engineering experiments.

- Pokémon: *Genetic*.
- Height: 6' 7".
- Weight: 269 lbs.



Figure 150: *Mewtwo* (Pokémon number 150).



## 151 #151 : Mew

So rare that it is still said to be a mirage by many experts. Only a few people have seen it worldwide.

- Pokémon: *New*.
- Height: 1' 4".
- Weight: 9 lbs.



Figure 151: *Mew* (Pokémon number 151).

