

Linear Response Theory & Kubo's Formula for Electronic Transport

Jean BELLISSARD ^{1 2}

*Georgia Institute of Technology, Atlanta,
⌘
Institut Universitaire de France*

Collaborations:

H. SCHULZ-BALDES (T.U. Berlin, Germany)

D. SPEHNER (Essen, Germany)

R. REBOLLEDO (Pontificia Universidad Catolica de Chile)

H. von WALDENFELS (U. Heidelberg, Germany)

¹Georgia Institute of Technology, School of Mathematics, Atlanta, GA 30332-0160

²e-mail: jeanbel@math.gatech.edu

Main References

D. SPEHNER, *Contributions à la théorie du transport électronique, dissipatif dans les solides apériodiques*, Thèse, 13 mars 2000, Toulouse.

J. BELLISSARD, *Coherent and dissipative transport in aperiodic solids*, in *Dynamics of Dissipation*, pp. 413-486, Lecture Notes in Physics, 597, Springer (2002).
P. Garbaczewski, R. Olkiewicz (Eds.).

Content

1. Linear Response Theory: Heuristic Background
2. Transport Coefficients
3. Kubo's Formula

Warning

This lecture gives a heuristic discussion of problems posed by the linear response theory in view of a more rigorous study. It does not intend to give mathematically rigorous results.

I - Linear Response Theory: Heuristic Background

Linear Response

Experiments show that if a *force* \vec{F} is imposed to a system, its response is a *current* \vec{j} vanishing as the force vanishes. Thus for \vec{F} small

$$\vec{j} = L \cdot \vec{F} + O(\vec{F}^2),$$

Here L is a matrix of *transport coefficients*.

Examples:

1. **FOURIER**'s law: a temperature gradient produces a heat current $\vec{j}_{heat} = -\lambda \vec{\nabla} T$.
2. **OHM**'s law: a potential gradient (electric field) produces an electric current $\vec{j}_{el} = -\sigma \vec{\nabla} V$.
3. **FICK**'s law: a density gradient produce a flow of matter $\vec{j}_{matter} = -\kappa \vec{\nabla} \rho$.

- *What is the domain of validity ?*

- *What happens for quantum systems ?*

A No-Go Theorem: Bloch's oscillations

If $H = H^*$, the *one-electron* Hamiltonian, is *bounded* and if $\vec{R} = (R_1, \dots, R_d)$ is the *position* operator (self-adjoint, commuting coordinates), the *current* is

$$\vec{J} = \text{const.} \frac{i}{\hbar} [H, \vec{R}],$$

Adding a force \vec{F} at time $t = 0$ leads to a new evolution with Hamiltonian $H_F = H - \vec{F} \cdot \vec{R}$. The 0-frequency component of the current is

$$\vec{j} = \lim_{t \rightarrow \infty} \int_0^t \frac{ds}{t} e^{isH_F/\hbar} \vec{J} e^{-isH_F/\hbar},$$

Simple algebra shows that (since $\|H\| < \infty$)

$$\vec{F} \cdot \vec{j} = \text{const.} \lim_{t \rightarrow \infty} \frac{H(t) - H}{t} = 0,$$

WHY?

This is called *Bloch's Oscillations*

Dissipation

Dissipation is the *loss of information* experienced by the system observed as the time goes on

SECOND PRINCIPLE OF THERMODYNAMICS

Clausius-Boltzman entropy

The sources of dissipation can take various aspects

1. External noise random in time
2. Exchange with a thermal bath
(reservoir with infinite energy)
3. Collisions/interactions with other particles
4. Loss of energy at infinity (infinite volumes)
5. Chaotic motion: sensitivity to initial conditions
Kolmogorov-Sinai entropy
6. Quantum measurement (wave function collapse)
7. Quantum Chaos: the Hamiltonian behaves like a random matrix. *Voiculescu entropy* .

Length, Time & Energy Scales

1. Length scales:

- *Scattering length*: range of interactions between colliding particles.
- *Mean free path*: minimum distance between collisions
- *Mesoscopic scale*: minimum size for the system to reach a local thermodynamical equilibrium.
- *Sample size*

2. Times scales:

- *Scattering time*
- *Collision time*: time between two consecutive collisions
- *Relaxation time*: time for a mesoscopic size to relax to equilibrium
- *Measurement time*
- Other times: Heisenberg times $\hbar/\Delta E$, \dots

3. Energy scales

Exchanges of Limits

1. *Infinite volume* limit & *low dissipation* limit:

- Usually

$$\text{mean free path} \ll \text{sample size}$$

(i) infinite volume limit (ii) low dissipation limit.

- In nanoscopic systems linear response may fail !
The *resistivity* of a molecule is meaningless !

2. *Zero external force* limit & *large time measurement* limit:

- in solids

$$\frac{\hbar}{eV} \approx 10^{-12} - 10^{-15} \text{ s.} \ll \text{measurement time}$$

(i) infinite measurement time limit

(ii) low external field.

- In *pico-femtosecond* laser experiments, failures of linear response theory are observed.

II - Transport Coefficients

Local Equilibrium Approximation

- **Length Scales:**

$$\ell \ll \delta L \ll L$$

ℓ is a typical *microscopic* length scale
 L the typical *macroscopic* length scale.
Then δL is called *mesoscopic*.

- **Time Scales:**

$$\tau_{rel} \ll \delta t \ll t$$

τ_{rel} is a typical *microscopic* time scale
 t the typical *macroscopic* time scale.
Then δt is called *mesoscopic*.

- The system is partitionned into *mesoscopic cells*
the time is partitionned into *mesoscopic intervals*.
- Mesoscopic cells are *completely open* systems
After a time $O(\delta t)$ they return to *equilibrium*.

- Let H be the Hamiltonian of the part of the subsystem contained in the mesoscopic cell located at \vec{x} at time t .
- Let $\hat{X}_1 = H, \hat{X}_2 \cdots, \hat{X}_K$ be a complete family of first integral, namely observables commuting with the Hamiltonian.
- Let $\mathcal{Q}(\vec{x}, t)$ be the set of indices labeling a common eigenbasis of the \hat{X}_α 's: it is the set of *microstates* of the system contained in the mesoscopic cell.
- If $\mathbb{P}_{(\vec{x}, t)}(q)$ denotes the Gibbs probability of the microstate $q \in \mathcal{Q}(\vec{x}, t)$, its *Boltzman entropy* is given by

$$S(\mathbb{P}) = -k_B \sum_{q \in \mathcal{Q}(\vec{x}, t)} \mathbb{P}_{(\vec{x}, t)}(q) \ln \mathbb{P}_{(\vec{x}, t)}(q)$$

- The *maximum entropy principle* gives *Lagrange multipliers* $T(\vec{x}, t), F_2(\vec{x}, t), \cdots, F_K(\vec{x}, t)$ called *conjugate variables*. (In the following $F_1 = 1$)

- The Gibbs state for the mesoscopic cell centered at $\vec{x} \in \mathbb{R}^d$ at time t is:

$$\mathbb{P}_{(\vec{x},t)}(q) = \frac{1}{\mathcal{Z}(\vec{x},t)} e^{-\frac{\sum_{\alpha=1}^K F_{\alpha}(\vec{x},t) \hat{X}_{\alpha}(q)}{k_B T(\vec{x},t)}}$$

- The average values of the first integrals are

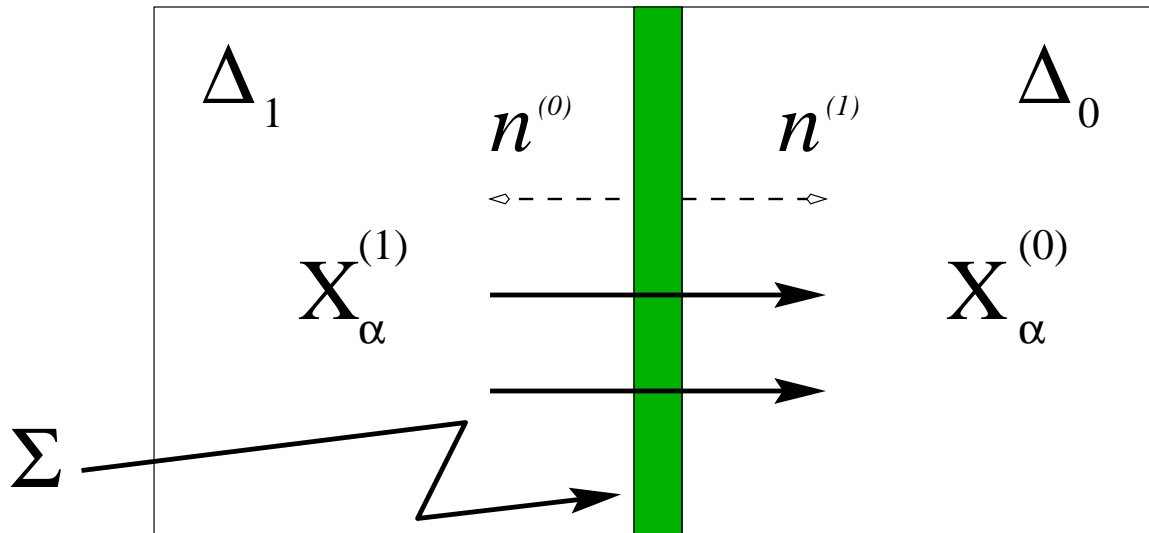
$$\delta X_{\alpha}(\vec{x},t) = \sum_{q \in \mathcal{Q}(\vec{x},t)} \mathbb{P}_{(\vec{x},t)}(q) \hat{X}_{\alpha}(q).$$

- The *volume* of the cell $\delta V(\vec{x},t) = \delta V$ is mesoscopic and chosen constant in space and time.
- Then $\delta X_{\alpha}(\vec{x},t) = O(\delta V)$ and the *local density* of X_{α} is

$$\rho_{\alpha}(\vec{x},t) = \frac{\delta X_{\alpha}(\vec{x},t)}{\delta V}.$$

- Under an infinitesimal change of equilibrium the entropy changes as $TdS = \sum_{\alpha} F_{\alpha} d\delta X_{\alpha}$

Fluxes & Currents



- Transfer of X_α from cell $\Delta^{(1)}$ to cell $\Delta^{(0)}$ across area $\delta\Sigma$ during time δt gives a variation in time

$$\delta X_\alpha(\vec{x}, t) = -\vec{j}_\alpha(\vec{x}, t) \cdot \vec{n}^{(1)} \delta\Sigma \delta t.$$

where $\vec{n}^{(1)}$ is the normal to area oriented from $\Delta^{(1)}$ to $\Delta^{(0)}$.

- $\vec{j}_\alpha(\vec{x}, t)$ is the *local current* associated with X_α . It is *mesoscopic* rather than *microscopic*.

- Since X_α is conserved under evolution the balance leads to the *continuity equation*

$$\frac{\partial \rho_\alpha}{\partial t}(\vec{x}, t) + \vec{\nabla} \cdot \vec{j}_\alpha(\vec{x}, t) = 0.$$

- The *entropy density* is $s = \frac{\delta S}{\delta V}$
The entropy variation is then given by

$$\frac{\partial s}{\partial t} = \sum_{\alpha=1}^K \frac{F_\alpha}{T} \frac{\partial \rho_\alpha}{\partial t}.$$

- The *current entropy* is define through

$$\vec{j}_s(\vec{x}, t) = \sum_{\alpha=1}^K \frac{F_\alpha}{T} \vec{j}_\alpha(\vec{x}, t).$$

- The *entropy production rate* is then

$$\frac{ds}{dt} = \frac{\partial s}{\partial t} + \vec{\nabla} \cdot \vec{j}_s = \sum_{\alpha=1}^K \vec{\nabla} \cdot \left(\frac{F_\alpha}{T} \right) \vec{j}_\alpha(\vec{x}, t).$$

and is *positive* thanks to the 2nd Principle.

Linear Response

- A variation of the F_α/T 's produces currents.
In the local equilibrium approximation

$$\vec{j}_\alpha = \sum_{\beta=1}^K L_{\alpha,\beta} \vec{\nabla} \left(\frac{F_\beta}{T} \right) + O \left\{ \left| \vec{\nabla} \left(\frac{F_\beta}{T} \right) \right|^2 \right\}$$

- The $L_{\alpha,\beta}$'s are $d \times d$ matrices called *Onsager coefficients*.
- The gradient of F_α/T is an *affinity*.
It plays a role similar to *forces*.
- By 2nd Principle, the positivity of entropy production rate implies

$$\mathbb{L} = ((L_{\alpha,\beta}))_{\alpha,\beta=1}^K \Rightarrow \mathbb{L} + \mathbb{L}^t \geq 0$$

- **Reciprocity Relations:** if, under time reversal symmetry, $X_\alpha \xrightarrow{TR} \varepsilon_\alpha X_\alpha$ then

$$L_{\beta,\alpha}(\text{parameters}) = \varepsilon_\alpha \varepsilon_\beta L_{\alpha,\beta}^t(\text{TR-parameters}).$$

Dissipative & Nondissipative Response

- **Dissipation = Loss of Information**

Dissipation contributes to entropy production.

Hence

$$\mathbb{L}^{(diss)} = \frac{1}{2} (\mathbb{L} + \mathbb{L}^t)$$

- The *nondissipative* part

$$\mathbb{L}^{(nondis)} = \frac{1}{2} (\mathbb{L} - \mathbb{L}^t)$$

contains quantities exhibiting *quantization* at very low temperature !

- The *Hall conductivity* is nondissipative. It is quantized at $T = 0$.
- Quantization of currents in superconductors.

- **Warning:** In *mesoscopic* systems, the quantization of conductance, thermal conductance, mechanical response, is due to the lack of dissipation. The system is too small for the local equilibrium approximation to hold.

III - Kubo's Formula

Mesoscopic Quantum Evolution

- *Observable algebra* $\mathcal{A} = \mathcal{A}_S \otimes \mathcal{A}_E$
($S = \text{system}$, $E = \text{environment}$).
- *Quantum evolution* $\eta_t \in \text{Aut}(\mathcal{A})$,
 $t \in \mathbb{R} \mapsto \eta_t(B) \in \mathcal{A}$ continuous $\forall B \in \mathcal{A}$.
- *Initial state* $\rho \otimes \rho_E$
- *System evolution*

$$\rho(\Phi_t(A)) = \rho_t(A) = \rho \otimes \rho_E (\eta_t(A \otimes \mathbf{1}))$$

$\Phi_t : \mathcal{A}_S \mapsto \mathcal{A}_S$ is *completely positive*,
 $\Phi_t(\mathbf{1}) = \mathbf{1}$ and $t \mapsto \Phi_t(A) \in \mathcal{A}_S$ is continuous.

- *Markov approximation*: for δt mesoscopic

$$\Phi_{t+\delta t} \approx \Phi_t \circ \Phi_{\delta t} \approx \Phi_{\delta t} \circ \Phi_t$$

Then

$$\frac{\delta \Phi_t}{\delta t} = \mathfrak{L} \circ \Phi_t = \Phi_t \circ \mathfrak{L}$$

\mathfrak{L} is the *Lindbladian*.

- *Dual evolution* $\Phi_t^\dagger(\rho) = \rho \circ \Phi_t$ giving rise to \mathfrak{L}^\dagger .

Theorem 1 (Linblad '76) *If $\mathcal{A}_S = \mathcal{B}(\mathcal{H})$ and if Φ_t is pointwise norm continuous, there is a bounded selfadjoint operator H on \mathcal{H} and a countable family of operators L_i such that*

$$\mathfrak{L}(A) = i[H, A] + \sum_i \left(L_i^\dagger A L_i - \frac{1}{2} \{L_i^\dagger L_i, A\} \right)$$

The first term of \mathfrak{L} is the *coherent part* and corresponds to a usual Hamiltonian evolution.

The second one, denoted by $\mathfrak{D}(A)$ is the *dissipative* part and produces damping.

- *Stationary* states correspond to solutions of $\mathfrak{L}^\dagger \rho = 0$.
- *Equilibrium* states are stationary states with maximum entropy.

They are equivalent to *KMS* states with respect to the *thermal dynamics* which is generated by

$$H_{th} = H + \sum_{\alpha=2}^K F_\alpha \hat{X}_\alpha$$

Derivation of Greene-Kubo Formulæ

- In many cases there is a *position operator* acting on the Hilbert space of states and given by a commuting family $\vec{R} = (R_1, \dots, R_d)$ of selfadjoint operators. They describe the position of particles in the system S .
- \vec{R} generates a d -parameter group of automorphisms $\vec{k} \in \mathbb{R}^d \mapsto e^{i\vec{k} \cdot \vec{R}} A e^{-i\vec{k} \cdot \vec{R}}$ of the C^* -algebra \mathcal{A}_S . Thus $\vec{\nabla} = i[\vec{R}, \cdot]$ defines a $*$ -derivation of \mathcal{A}_S .
- The *mesoscopic velocity* of the particles is given by

$$\vec{V} = \mathfrak{L}(\vec{R}) = \vec{\nabla}H + \mathfrak{D}(\vec{R})$$

The first part corresponds to the *coherent velocity* the other to the *dissipative one*.

- The current associated with \hat{X}_α is given by

$$\vec{J}_\alpha = \frac{1}{2}\{\vec{V}, \hat{X}_\alpha\} = \vec{J}_\alpha^{(coh)} + \vec{J}_\alpha^{(diss)}$$

- At time $t = 0$, S is at equilibrium

$$\Rightarrow \rho_S = \rho_{eq.} \quad \mathfrak{L}^\dagger \rho_{eq.} = 0$$

- At $t > 0$, *forces* are switched on

$$\mathcal{E} = (\vec{\mathcal{E}}_1, \dots, \vec{\mathcal{E}}_K) \quad \text{with} \quad \vec{\mathcal{E}}_\alpha = \vec{\nabla}(F_\alpha/T)$$

so that

$$\mathfrak{L}_\mathcal{E} = \mathfrak{L} + \sum_{\alpha,j} \mathcal{E}_\alpha^j \mathfrak{L}_\alpha^j + O(\mathcal{E}^2)$$

- Hence the current becomes

$$J_\alpha^{\mathcal{E},i} = J_\alpha^i + \sum_{\alpha',j} \mathcal{E}_{\alpha'}^j \{ \mathfrak{L}_{\alpha'}^j(R^i), \hat{X}_\alpha \} + O(\mathcal{E}^2)$$

- Then, if the forces are constant in time

$$\begin{aligned} \vec{j}_\alpha &= \lim_{t \uparrow \infty} \int_0^t \frac{ds}{t} \rho_{eq.} \left(e^{s\mathfrak{L}_\mathcal{E}} \vec{J}_\alpha^\mathcal{E} \right) \\ &= \lim_{\epsilon \downarrow 0} \int_0^\infty \epsilon dt e^{-t\epsilon} \rho_{eq.} \left(e^{t\mathfrak{L}_\mathcal{E}} \vec{J}_\alpha^\mathcal{E} \right) \\ &= \lim_{\epsilon \downarrow 0} \rho_{eq.} \left(\frac{\epsilon}{\epsilon - \mathfrak{L}_\mathcal{E}} \vec{J}_\alpha^\mathcal{E} \right) \end{aligned}$$

- Since $\mathfrak{L}^\dagger \rho_{eq.} = 0$, $\rho_{eq.} \left(\frac{\epsilon}{\epsilon - \mathfrak{L}} \vec{J}_\alpha \right) = 0$

- Thus

$$\begin{aligned}
\vec{j}_\alpha &= \lim_{\epsilon \downarrow 0} \rho_{eq.} \left(\frac{\epsilon}{\epsilon - \mathfrak{L}_\mathcal{E}} \vec{J}_\alpha^\mathcal{E} - \frac{\epsilon}{\epsilon - \mathfrak{L}} \vec{J}_\alpha \right) \\
&= \lim_{\epsilon \downarrow 0} \rho_{eq.} \left(\frac{\epsilon}{\epsilon - \mathfrak{L}} \sum_{\alpha'} \vec{\mathcal{E}}_{\alpha'} \cdot \vec{\mathfrak{L}}_{\alpha'} \frac{1}{\epsilon - \mathfrak{L}_\mathcal{E}} \vec{J}_\alpha \right) \\
&\quad + \lim_{\epsilon \downarrow 0} \rho_{eq.} \left(\frac{\epsilon}{\epsilon - \mathfrak{L}} \sum_{\alpha'} \mathcal{E}_{\alpha'}^j \cdot \{ \mathfrak{L}_{\alpha'}^j(\vec{R}), \hat{X}_\alpha \} \right) \\
&\quad + O(\mathcal{E}^2)
\end{aligned}$$

- Since $\rho_{eq.} \circ \mathfrak{L} = 0$ this gives

$$\begin{aligned}
j_\alpha^i &= - \sum_{\alpha', j} \mathcal{E}_{\alpha'}^j \rho_{eq.} \left(\mathfrak{L}_{\alpha'}^j \frac{1}{\mathfrak{L}} J_\alpha^i \right) \\
&\quad + \rho_{eq.} \left(\{ \mathfrak{L}_{\alpha'}^j(R^i), \hat{X}_\alpha \} \right) \\
&\quad + O(\mathcal{E}^2)
\end{aligned}$$

- Hence the *Onsager coefficients* are

$$L_{\alpha, \alpha'}^{i, j} = -\rho_{eq.} \left(\mathfrak{L}_{\alpha'}^j \frac{1}{\mathfrak{L}} J_\alpha^i + \{ \mathfrak{L}_{\alpha'}^j(R^i), \hat{X}_\alpha \} \right)$$

Validity of Greene-Kubo Formulæ

The previous derivation is formal. Various conditions must be assumed.

- The explicit expressions for \mathfrak{L} and the $\vec{\mathfrak{L}}_{\alpha'}$'s are *model dependent*.
- It is necessary to prove that $\mathfrak{L}_{\mathcal{E}}(\vec{R}) \in \mathcal{A}_S$.
- The *inverse* of \mathfrak{L} is not *a priori* well defined.

However, the dissipative part \mathfrak{D} is usually responsible for the existence of the inverse. This is because

$$\text{Spec}(i[H, \cdot]) \subset i\mathbb{R}$$

while \mathfrak{D} gives a *non zero real part* to eigenvalues. In the *Relaxation Time Approximation*,

$$\mathfrak{D}(A) = A/\tau \quad \Rightarrow \quad \text{Spec}\left(i[H, \cdot] + \frac{\mathbf{1}}{\tau}\right) \subset i\mathbb{R} + \frac{1}{\tau}$$

where τ is the *relaxation time*.

IV - Relaxation Time Approximation

Conclusion

1. Linear response theory requires taking *dissipation* into account. Various limits take care of time or length scales.
These limits usually do not commute !
2. Dissipation is described through the *local equilibrium approximation* (LEA), leading to entropy creation by constant return to local equilibrium.
3. Thanks to the LEA, the currents becomes smooth functions of the *affinities* leading to the *transport* or *Onsager* coefficients.
4. A quantum treatment of transport coefficients must be provided for electrons in a solid.
The *Master equation* describes the dynamics within the LEA.
5. The Master Equation leads to the Greene-Kubo formula for Onsager coefficients.