









# SYDNEY





















# CAIRNS

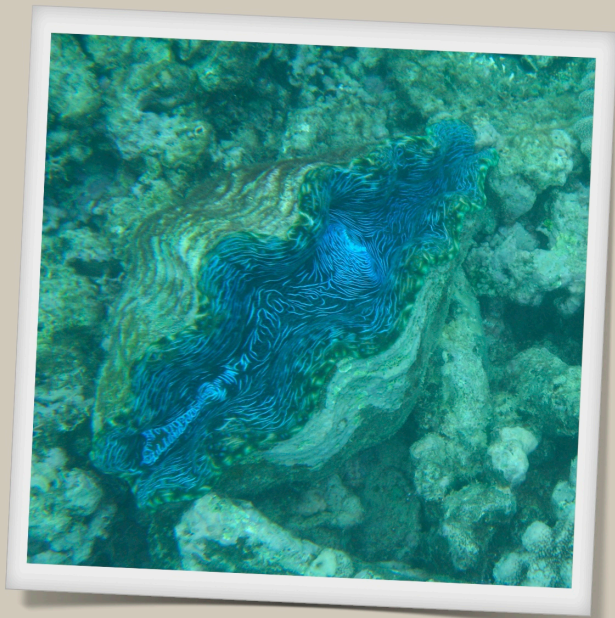




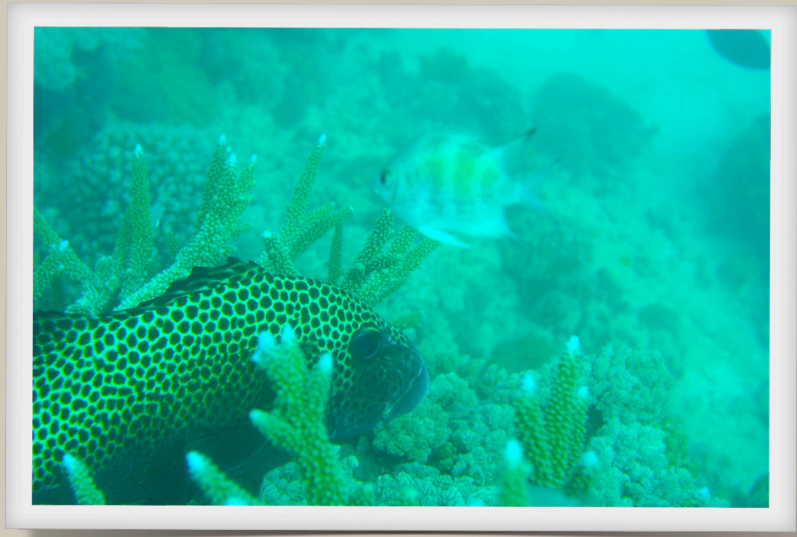




# GREAT BARRER REEF









# DAIN TREE NATIONAL PARK











**WARNING**  
**ACHTUNG** 警告



**Crocodiles inhabit this area – attacks may cause injury or death**

- Keep away from the water's edge and do not enter the water.
- Take extreme care when launching and retrieving boats.
- Do not clean fish or leave fish waste near the water's edge.
- Camp well away from the water.

Queensland Government  
 Environmental Protection Agency  
 Queensland Parks and Wildlife Service





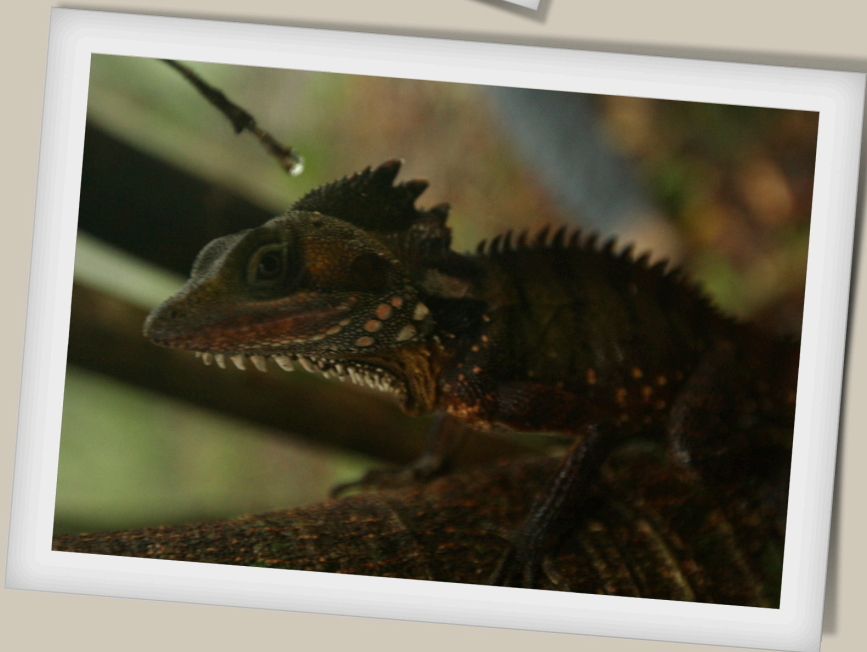




# CAPE TRIBULATION









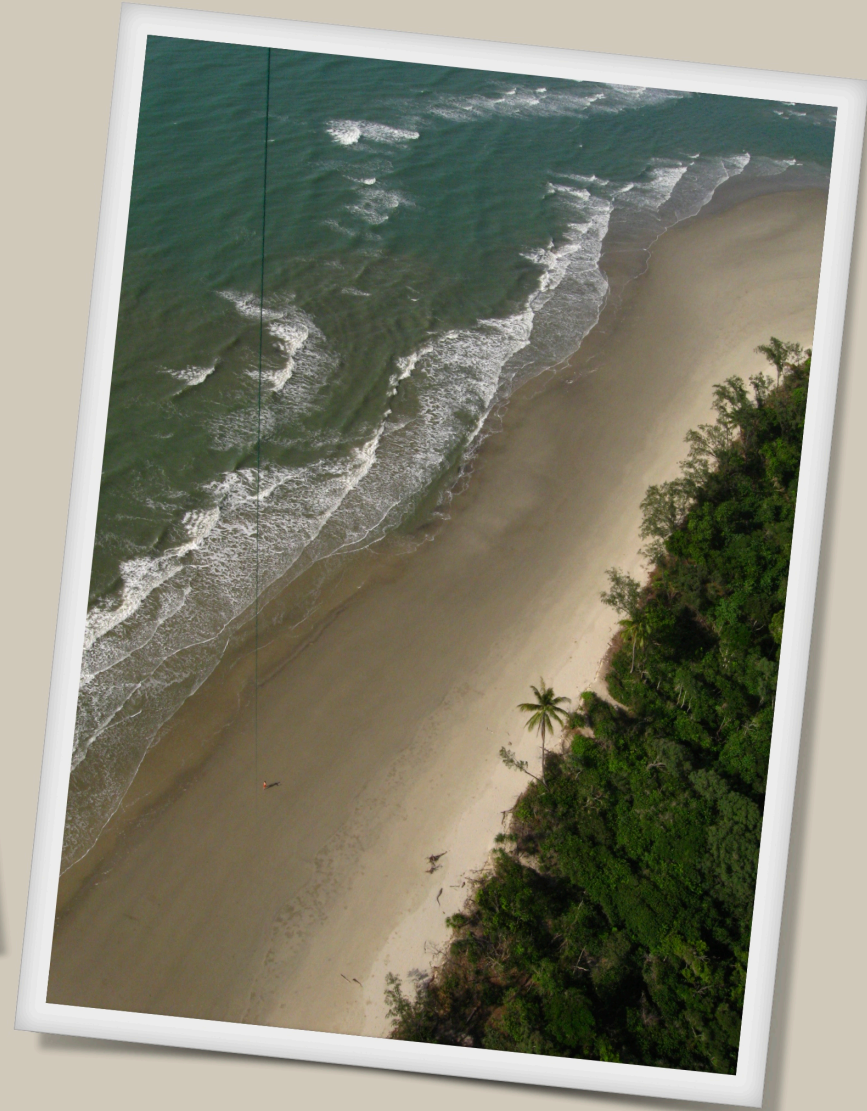




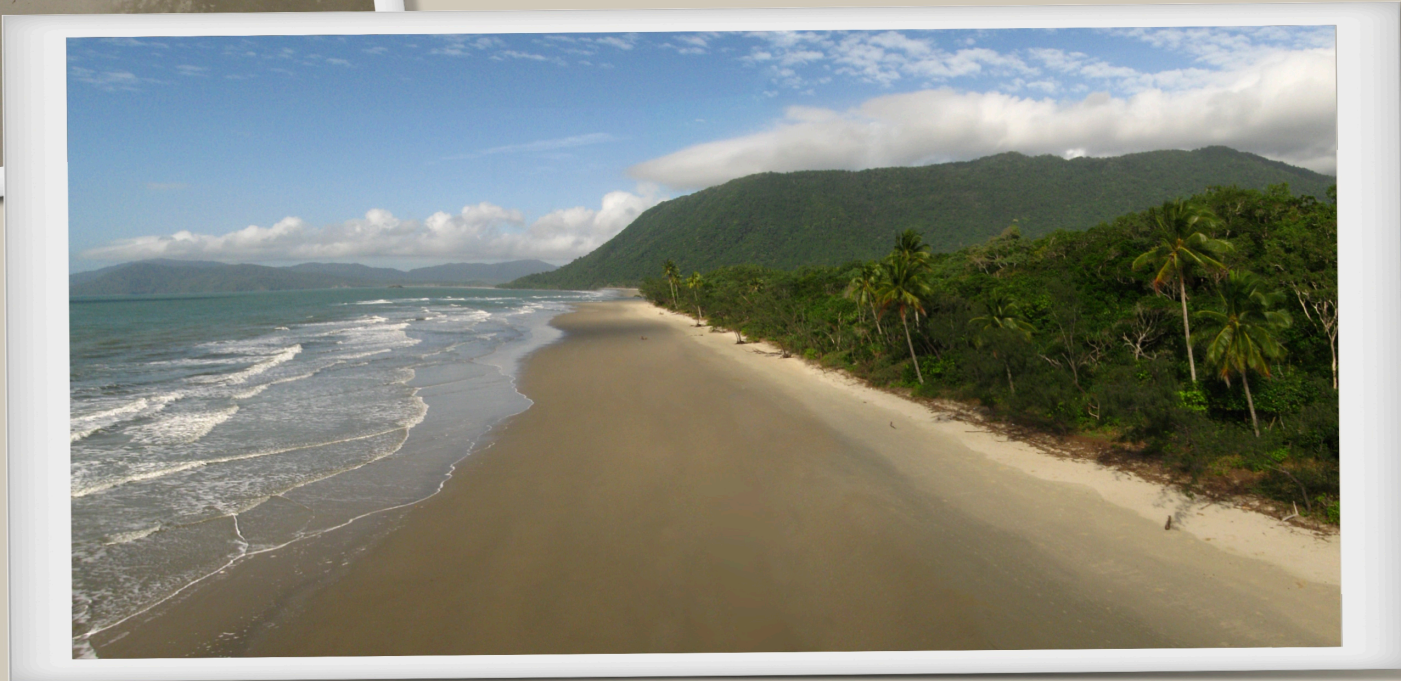
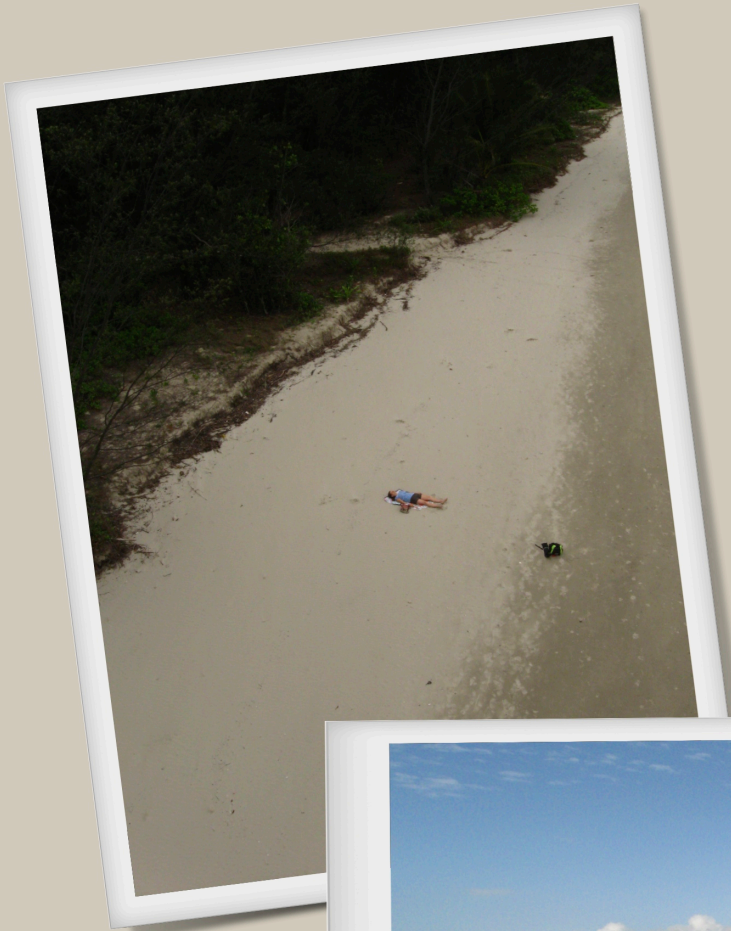




# MONGA BEACH





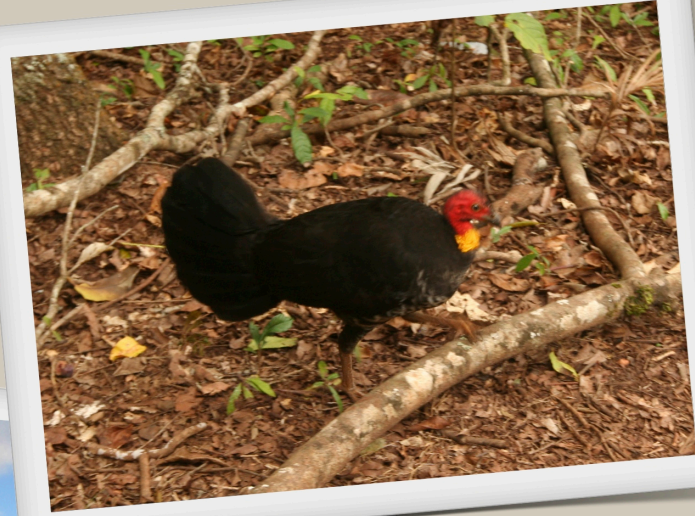








# LAKE TINAROO









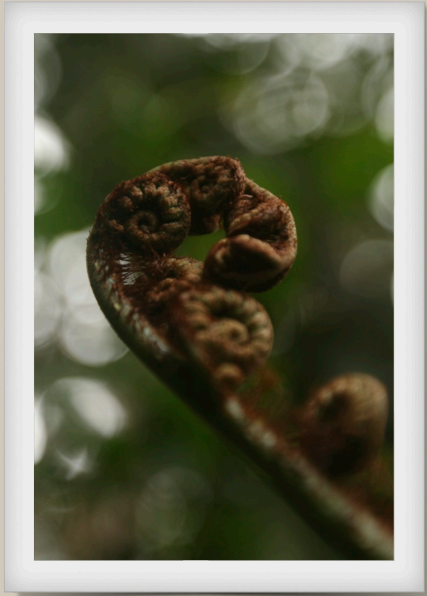








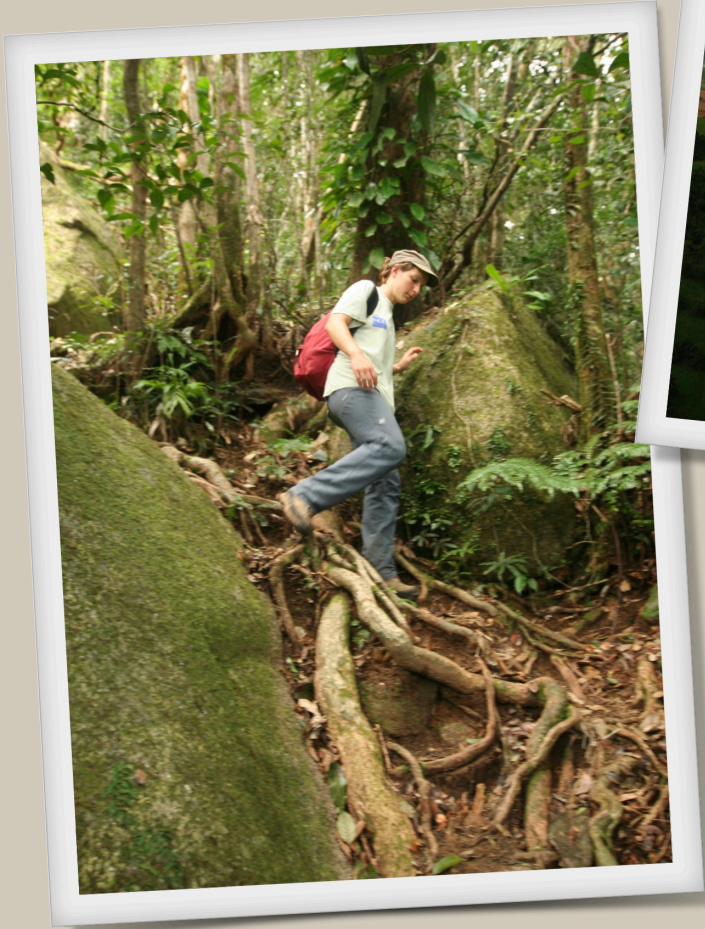
# JOSEPHINE FALLS









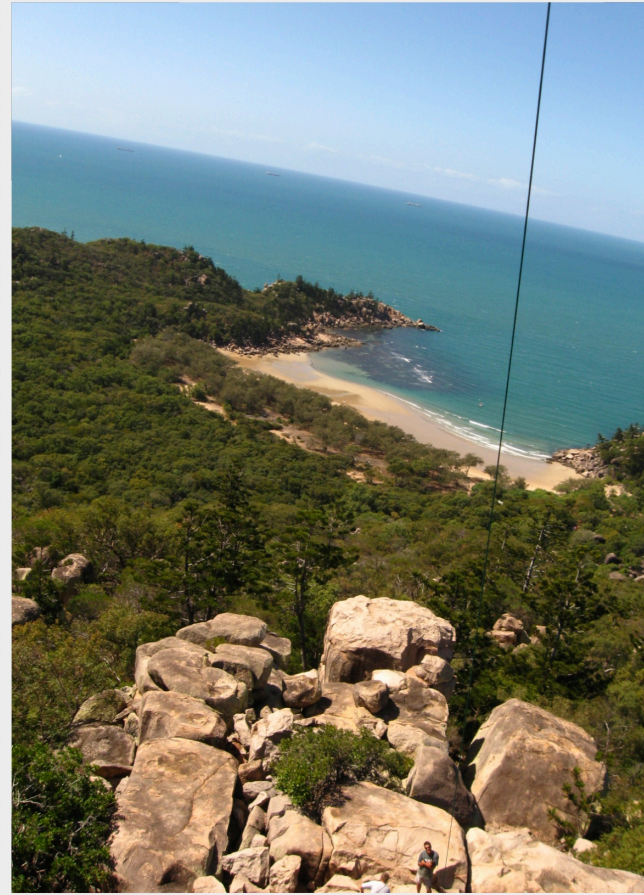




# MAGNETIC ISLAND









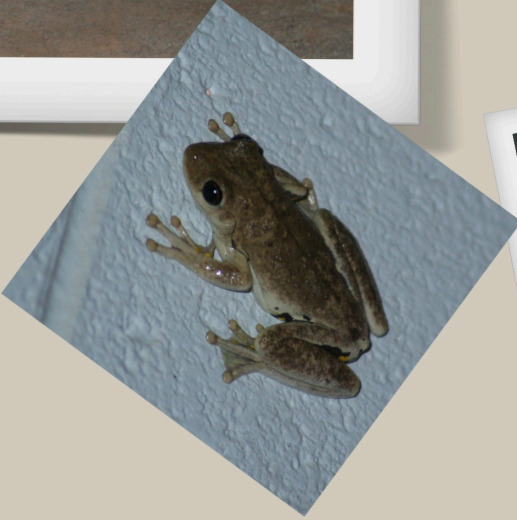




# PACIFIC HIGHWAY









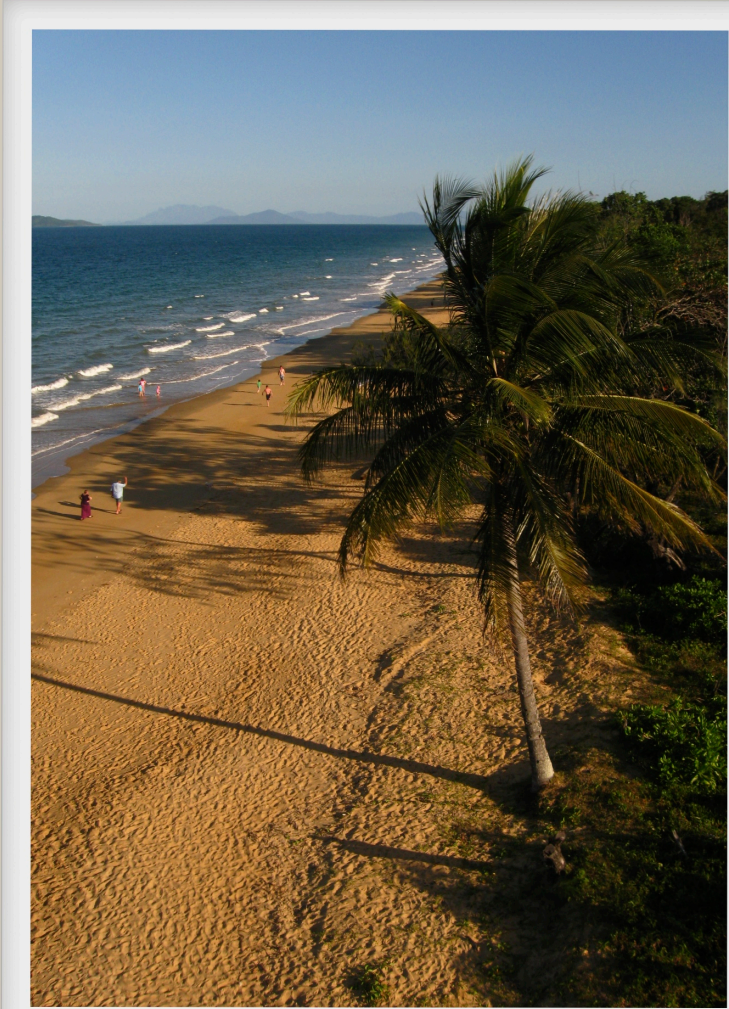




# MISSION BEACH

























# WHITESUNDAYS









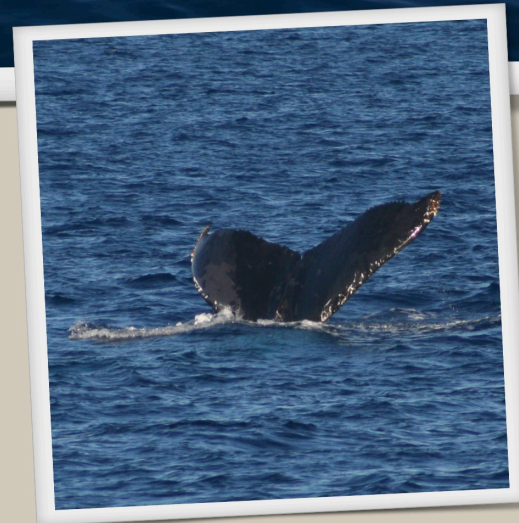




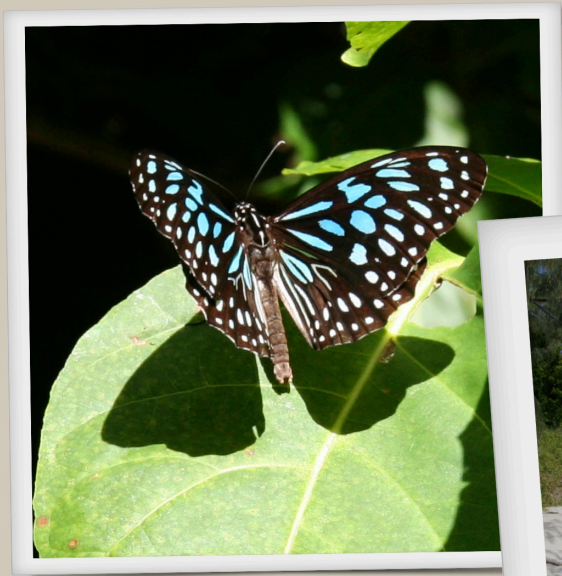
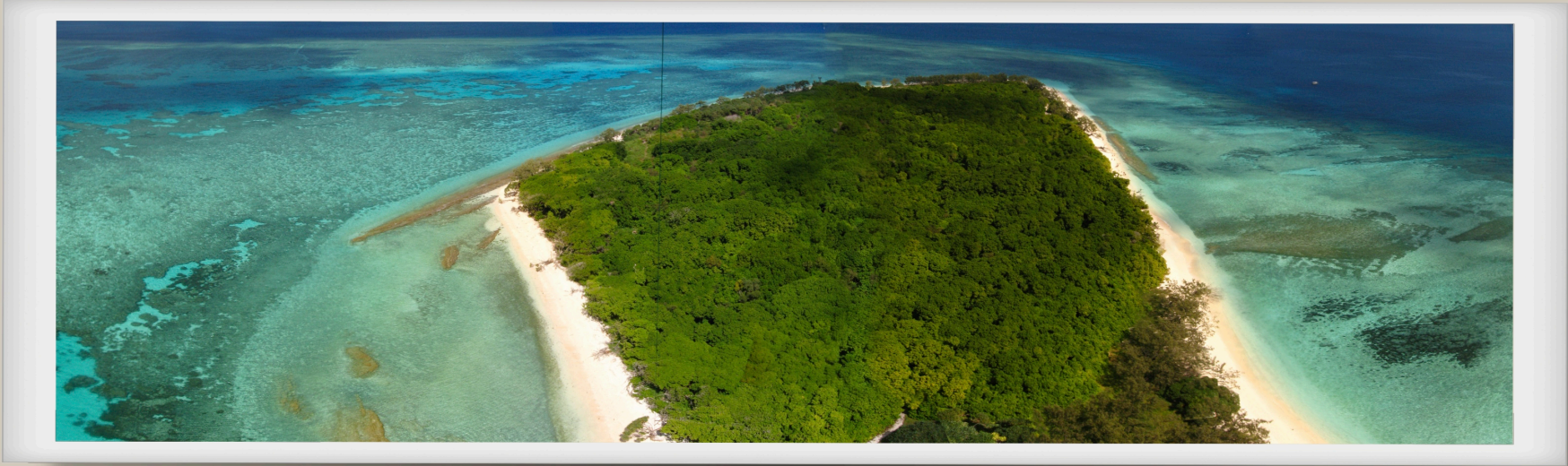




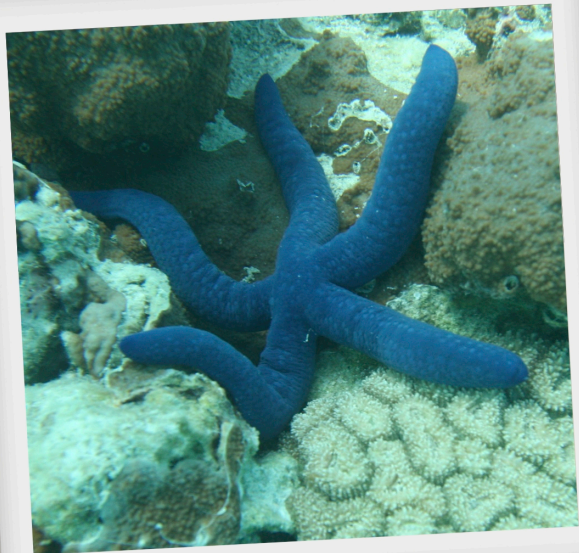
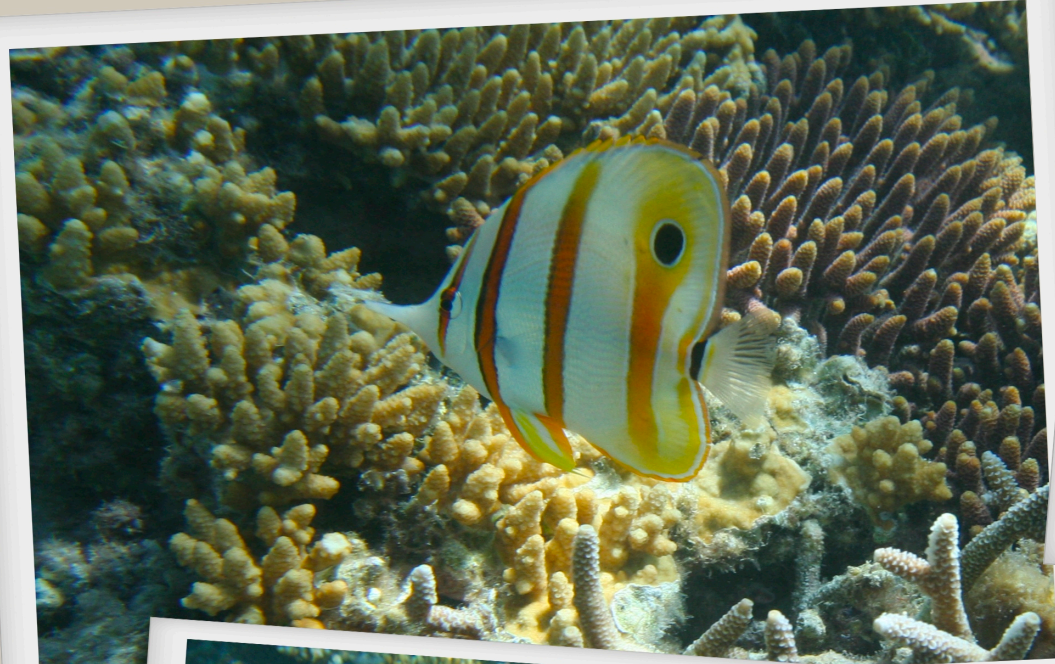
# LADY MUSGRAVE ISLAND



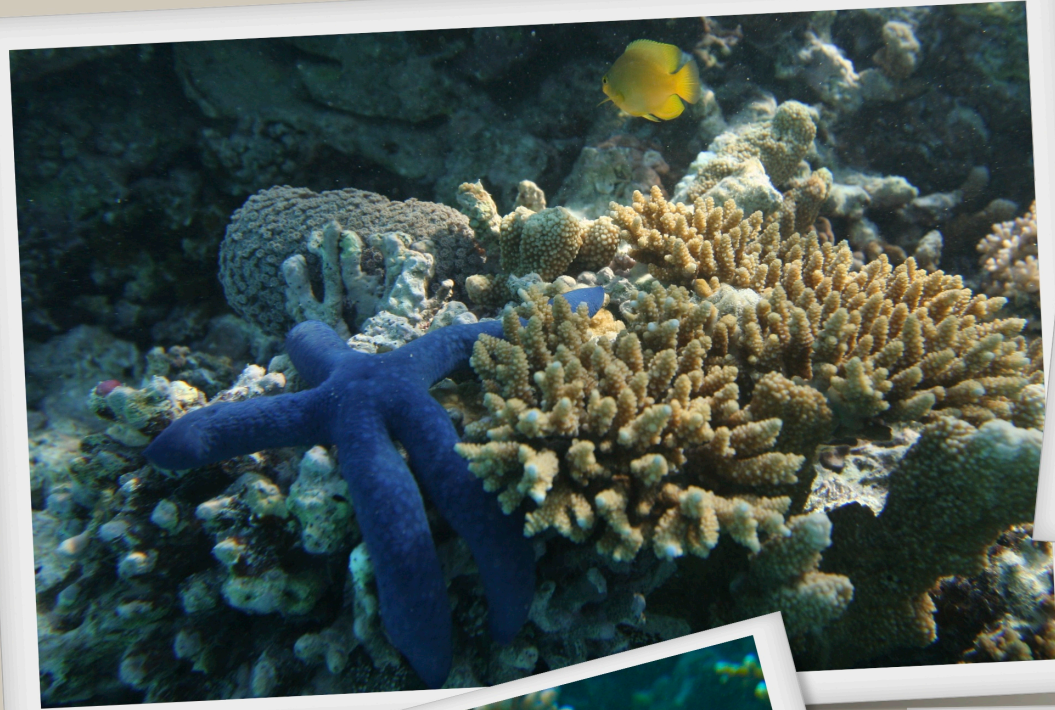














# TOWN OF 1771

















# SURFER PARADISE





# BYRON BAY

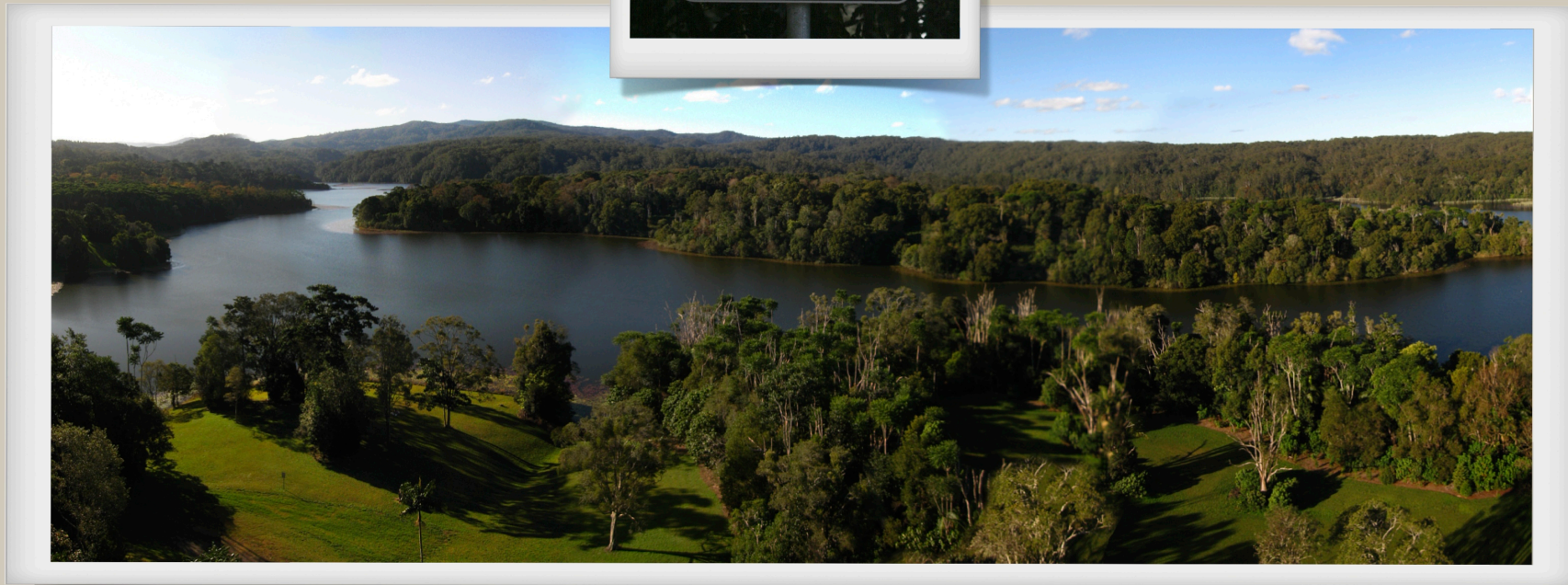








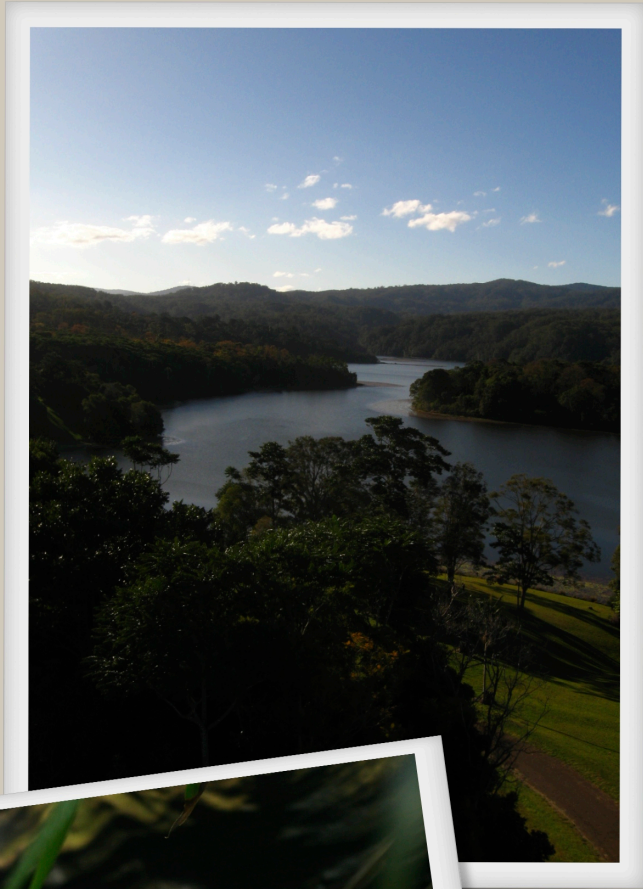
# ROCKY CREEK DAM













# MONT WARNING









# KANGARO















# RADICAL BAY

**MI 6**  
Beach Emergency  
Access Number  
DIAL 000

## GENERAL WARNINGS

EMERGENCY  
TREATMENT:  
FLOOD STING WITH  
VINEGAR. IF  
BREATHING STOPS  
APPLY ARTIFICIAL  
BREATHING  
AND CPR.



NOV-MAY



CAUTION



UNPATROLLED  
AREA

## LIFESAVING SERVICES



THIS BEACH IS NOT PATROLLED  
BY LIFEGUARDS.

## REGULATIONS



NO DOGS

VISITORS AND RESIDENTS ARE REQUIRED TO OBSERVE THE RESTRICTIONS  
DEPICTED ABOVE. CO-OPERATION WILL PREVENT THE NEED FOR PROSECUTION.

BY ORDER CHIEF EXECUTIVE OFFICER





